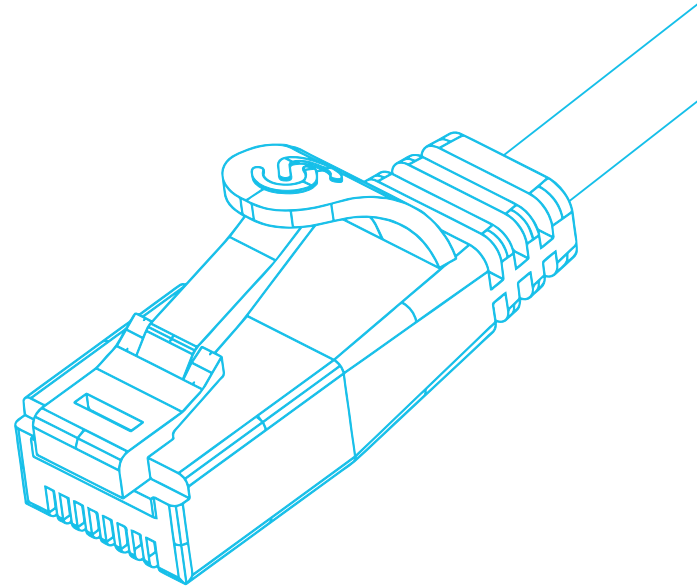




SLIM

EN



# pure patch

CATALOG  
FINE, FLAT & FLEXIBLE  
COPPER PATCH CORDS



# pure network





## MATURED IN STYRIA

Eastern Styria - diversity that inspires. From lofty heights to gentle hills, from breathtaking views in the alpine meadows to picturesque vineyards in the south - nature in this region is diverse and shapes the people who live here. It offers hospitality, thermal baths, culinary experiences, a good glass of wine, and the freedom to experience time anew. And at the heart of it all is TRIOTRONIK, which has been part of it for almost 30 years.

We are rooted here in the green heart of Austria and our hearts beat passionately for our company, the people who live here, our region and our landscape.

With values such as honesty, respect, appreciation and humility, we work closely together within the company and offer our products and services worldwide with a sense of quality and Styrian spirit.

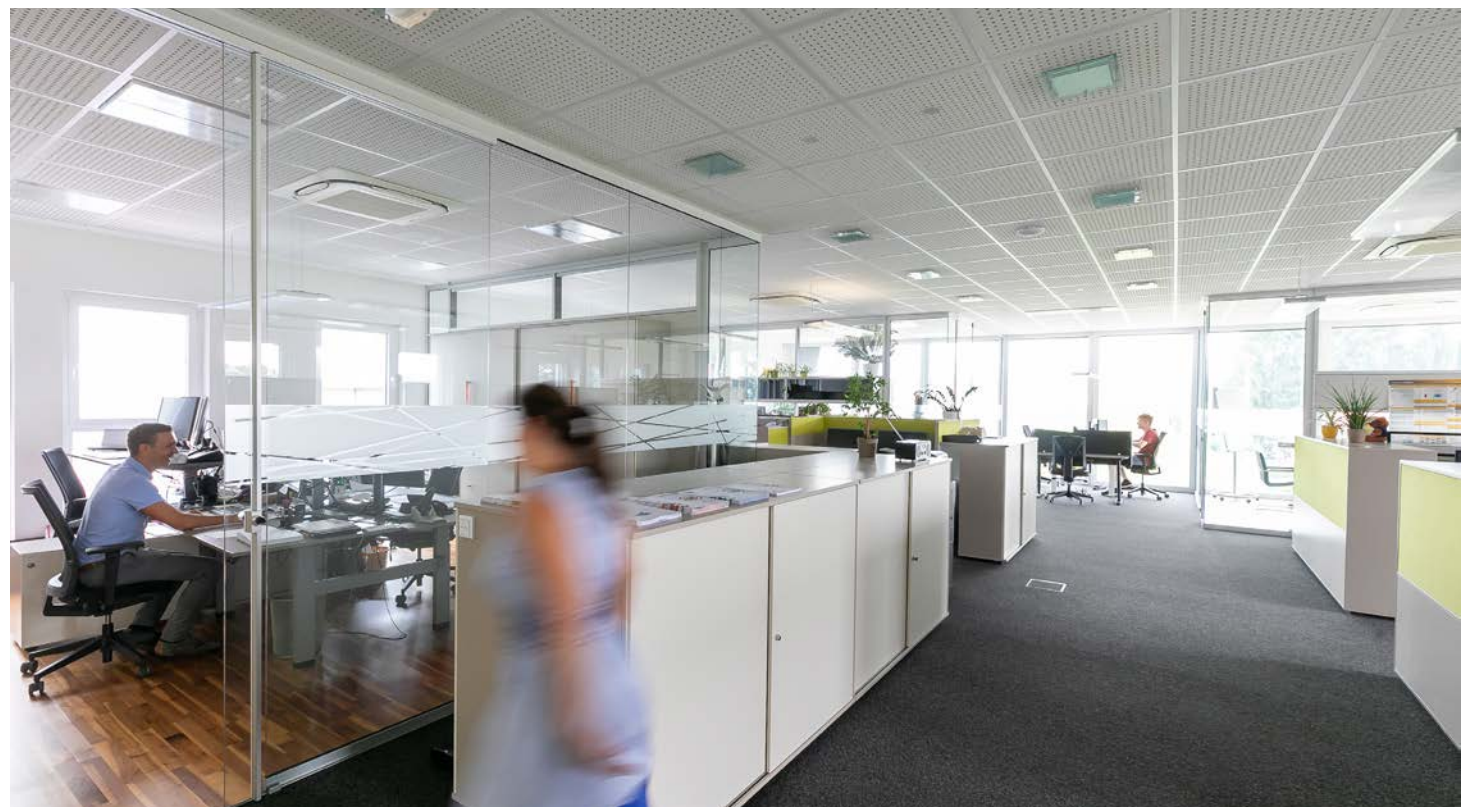
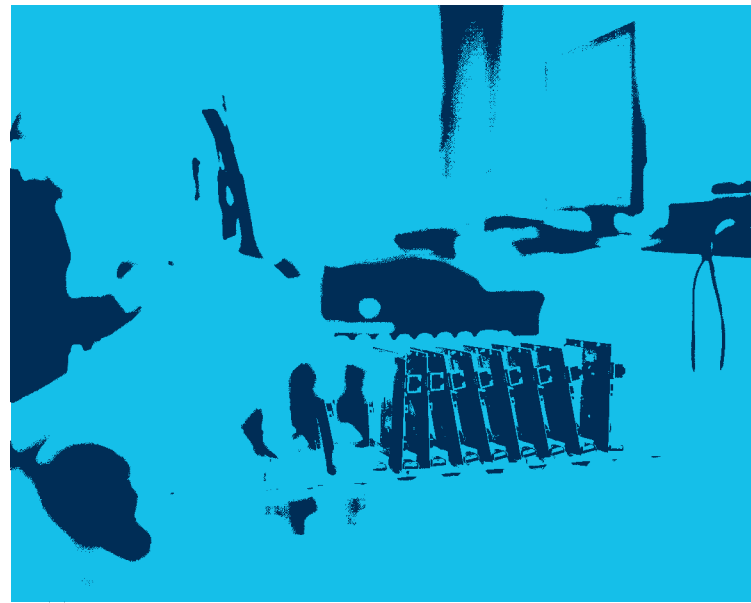
We not only take responsibility for our employees, but also support various charitable organizations in our region. In this way, we combine team spirit within the company with social commitment in the region and beyond. Our Vision: We want to become the leading competence center for network technology in Europe and establish our products on the global market. Together with you, we want to realize our vision and shape the future of network technology.

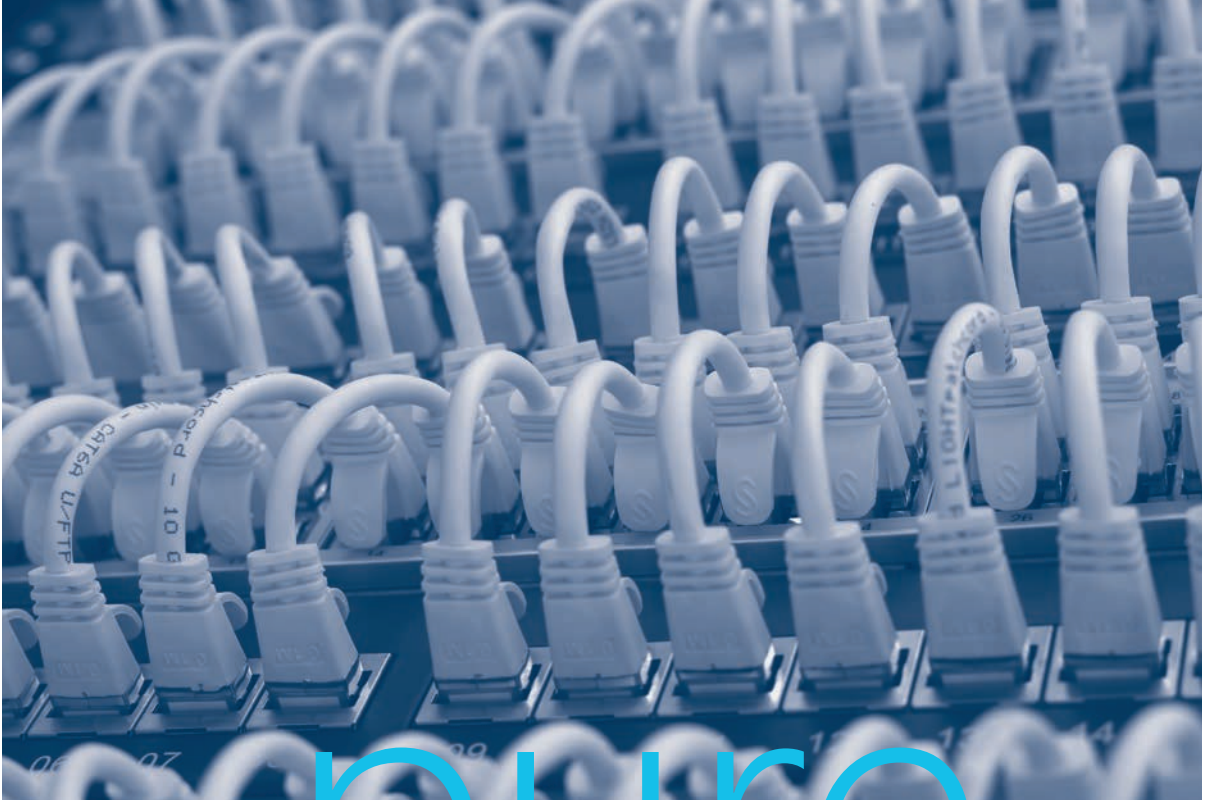


## ASPIRATION DRIVES QUALITY

Producing products of the highest quality and in accordance with European standards is not an empty promise, but a lived commitment within the company. At our headquarters in Weiz, Austria, brilliant minds with years of experience in the IT industry work every day to turn innovative ideas into reality. We develop new products, improve and optimize existing ones, and further develop our brand portfolio. In 2024 we restructured ourselves and are proud of our fresh appearance and the new company structure with the business areas TRIOTRONIK ACADEMY, TRIOTRONIK DISTRIBUTION and TRIOTRONIK TECHNOLOGIES. With more than 25 years of market experience in the distribution of active and passive IT network components, we can assure you that we produce and deliver high-quality network technology products reliably. .







pure  
quality



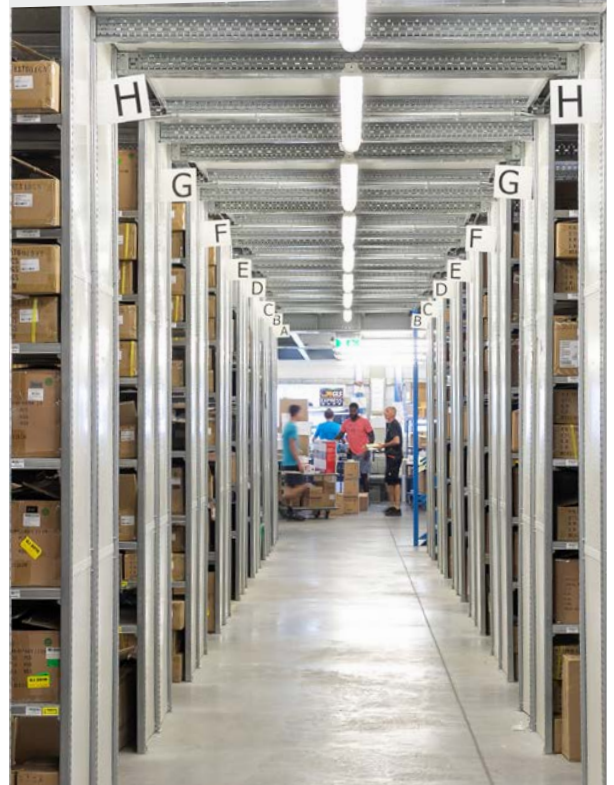
## NETWORK SUCCESS

We offer a wide range of networking solutions. Whether it's integrated network technology at the municipal level, components for fiber optic expansion, or robust and reliable network technology for industrial environments to support your transition to INDUSTRY 4.0, we provide optimal solutions tailored to your needs. Within our corporate network, we make sure you're well supported with our products. With the TRIOTRONIK ACADEMY we train your employees with selected training and development programs in the DACH region.

TRIOTRONIK DISTRIBUTION continues to supply you with all components on time and reliably. Our team maintains the familiar level of service and is always available to address your needs and concerns.

In TRIOTRONIK TECHNOLOGIES, our engineers, together with our team of experienced sales and production professionals, develop market-oriented and innovative products and solutions to shape the future of network technology.

At TRIOTRONIK, we call it PURE NETWORK - see for yourself and challenge us.







**FLAT**

Flat Copper Patch Cords

**14****LIGHT**

Round Copper Patch Cords

**24****TOUGH**

Nylon-Reinforced Copper Patch Cords

**36**

## YOUR SERVER RACK DOESN'T HAVE TO LOOK LIKE THIS!



### STAY IN CONTROL WITH OUR SLIM PATCH CORDS.

**SLIM cables** are inherently **more flexible** than standard cables.  
**Say goodbye to stiff cables.**

Not only are they **thin** and **flexible**, they are also **powerful**.

**Fast data transmission** is guaranteed. We guarantee compliance with internationally recognized cabling standards. Even **Power-over-Ethernet** is possible!

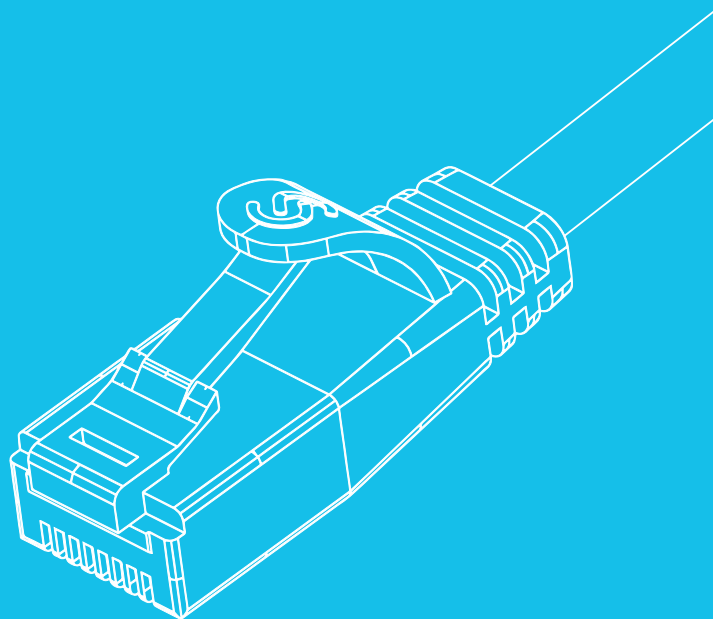
- World's thinnest Patch Cord
- Much more rack space
- Very short plug
- Extremely flexible
- Suitable for 1 and 10 Gigabit Ethernet
- Suitable for Power-over-Ethernet



RATHER  
LIKE  
THIS.



FLAT

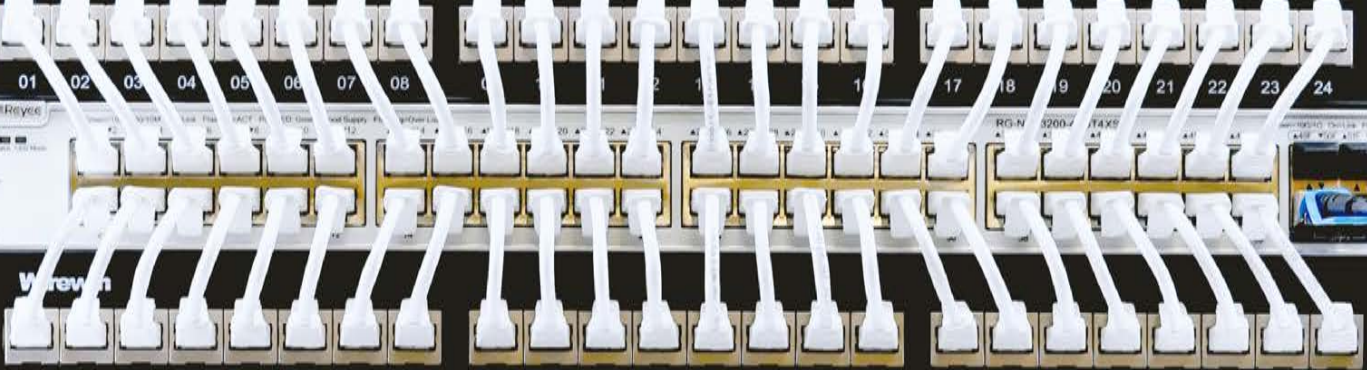


## FLAT COPPER PATCH CORD

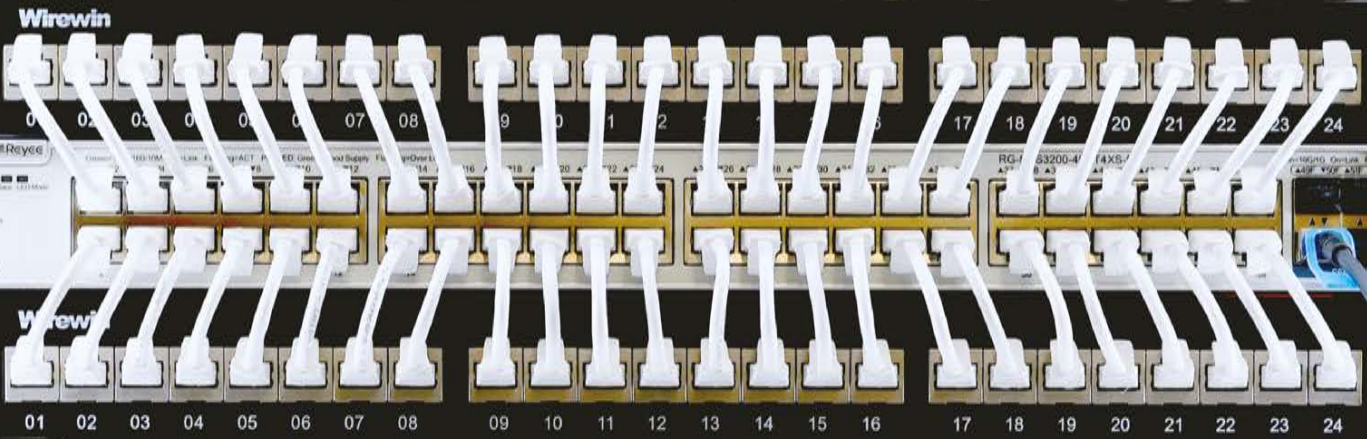
CAT6A SLIM PATCH CORD shielded, flat	18
CAT6 SLIM PATCH CORD unshielded, flat	20
CAT6 SLIM PATCH CORD shielded, flat	22



Cat.6



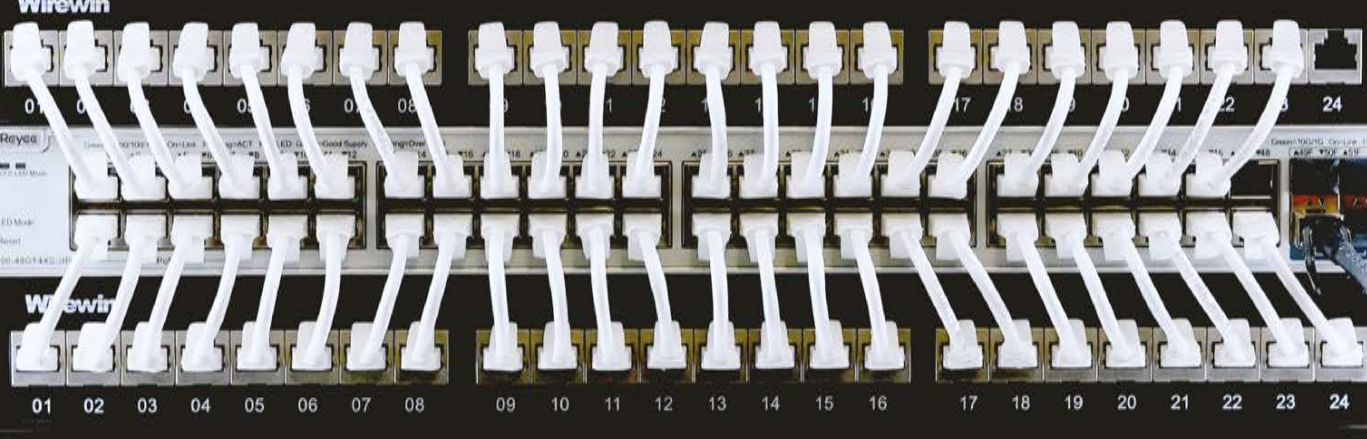
Cat6



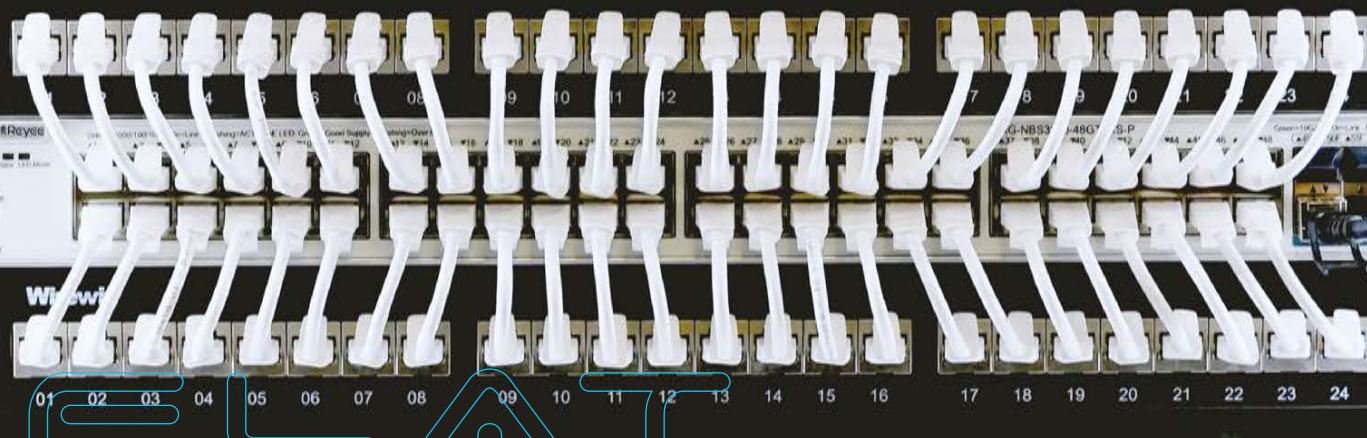
Cat6



Cat.6



Cat6



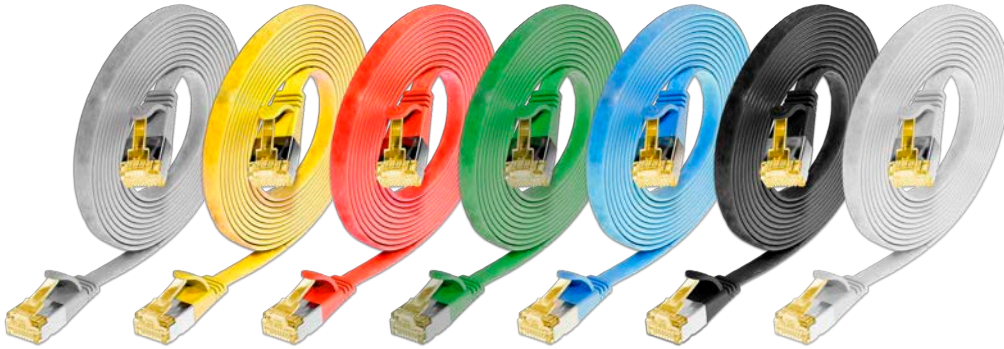
Cat.6

Cat.6



**FLEXIBLE  
INCLUDES  
SHIELDING:  
JUST SLIM**

## CAT6<sub>A</sub> SLIM PATCH CORD SHIELDED, FLAT



Unleash the Power of Speed: Introducing our High Performance Flat Patch Cord!

In the world of networking, speed is everything. That's why we understand that 10 Gigabit applications require more than their 1 Gigabit counterparts. Our state-of-the-art flat Patch Cord is designed to meet the extraordinary technical demands of 10 Gigabit deployments, ensuring unparalleled performance and reliability.

Equipped with superior shielding for each pair, our cables go above and beyond to maintain signal integrity. Compliant with the stringent Channel Category 6A standard of ISO/IEC and EN50173, our cables meet the highest industry benchmarks to ensure your network delivers exceptional performance. Power-over-Ethernet transmission? We've got you covered. Our cable supports this advanced feature, giving you the flexibility to power your devices effortlessly.

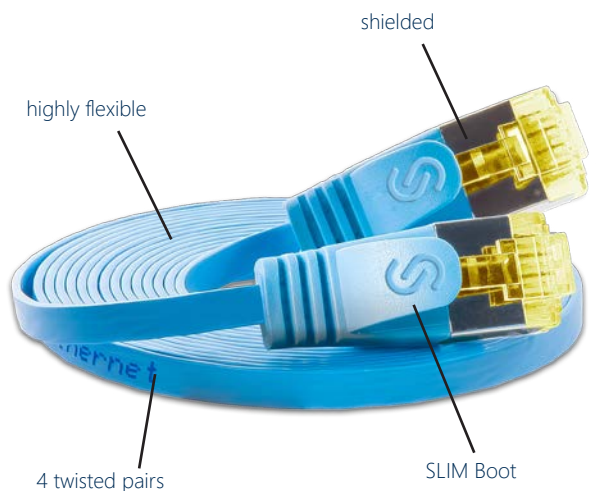
Experience convenience like never before with our specially designed plug. With user-friendly push-button operation and a sleek, compact design, connecting your devices has never been easier or more efficient.

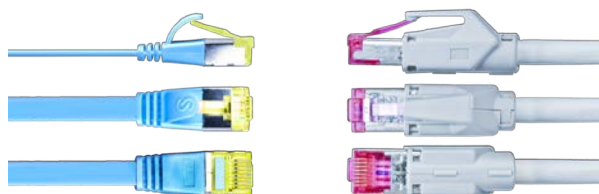
Upgrade your network today with our high-performance flat Patch Cord. Embrace a future of speed, reliability and innovation. Your network deserves nothing less.



### DESCRIPTION

Category	CAT6A
Connector Type	RJ45
Boot	SLIM design, snap-on nose guard, Length specification
Assignment	1:1 TIA/EIA 568B
Shield	U/FTP shielded
Sheath	PVC
Wires	AWG32 100% Copper
Dimensions	6.0 mm x 1.9 mm
Temperature range	-20°C to +60°C
Standard colours	Gray, Yellow, Red, Green, Blue , Black, White
Packaging unit	Single Unit
Standard lengths	0,1 / 0,25 / 0,5 / 1,0 / 1,5 / 2,0 / 3,0 / 5,0 / 7,0m





The comparison shows the difference.



**The dream of every IT technician, network administrator, mechatronics engineer or building systems engineer:**

- No cable clutter, cable jams, and so-called „cable management“.
- Flat and highly flexible network cables make this dream a reality.

## ORDER INFORMATION

### COLOUR

Gray  
Yellow  
Red  
Green  
Blue  
Black  
White

### PART NUMBER

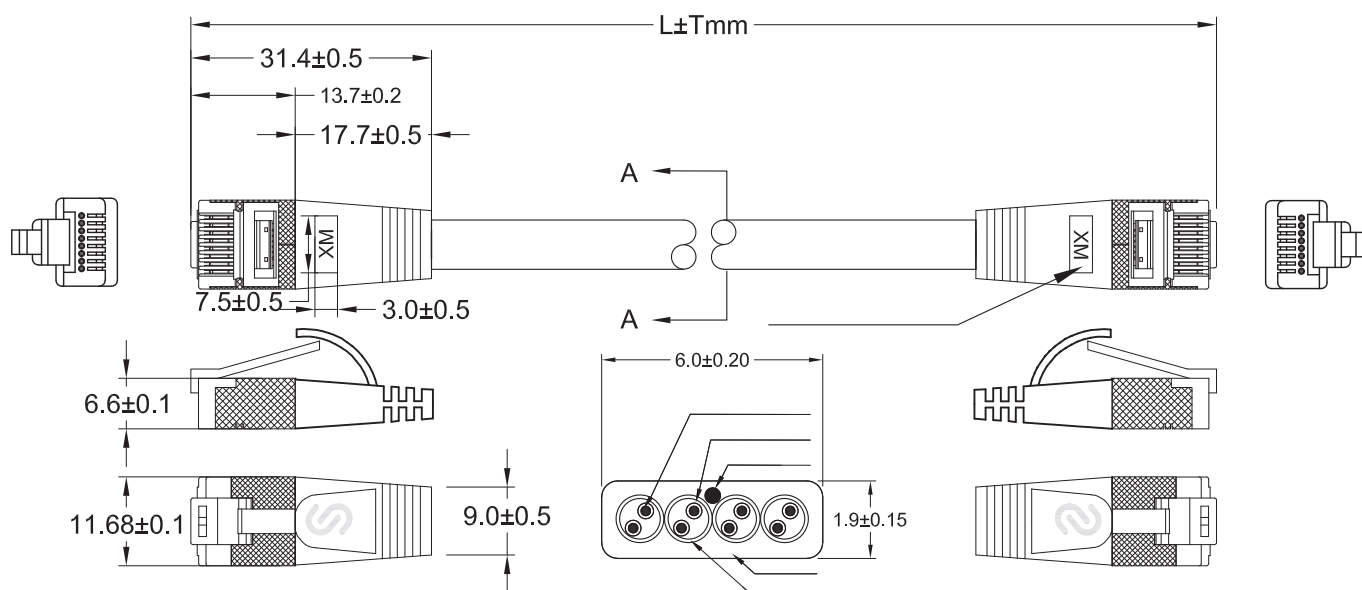
PKW-STP-SLIM-K6A **x.x**  
PKW-STP-SLIM-K6A **x.x** GE  
PKW-STP-SLIM-K6A **x.x** RT  
PKW-STP-SLIM-K6A **x.x** GN  
PKW-STP-SLIM-K6A **x.x** BL  
PKW-STP-SLIM-K6A **x.x** SW  
PKW-STP-SLIM-K6A **x.x** WS

**x.x** = Length specification

Standard lengths:

0.1 / 0.25 / 0.5 / 1.0 / 1.5 / 2.0 / 3.0 / 5.0 / 7.0m

Custom lengths possible



## CAT6 SLIM PATCH CORD UNSHIELDED, FLAT



This type of cable was our first product in 2004. Millions of units have been sold since then. It is still one of our most popular products.

The cable is designed for 1 Gigabit Ethernet. It consists of 4 twisted pairs with the thinnest possible copper diameter, resulting in an extremely slim and highly flexible design.

Despite the thin design, Power over Ethernet according to IEEE 802.3af is also possible.

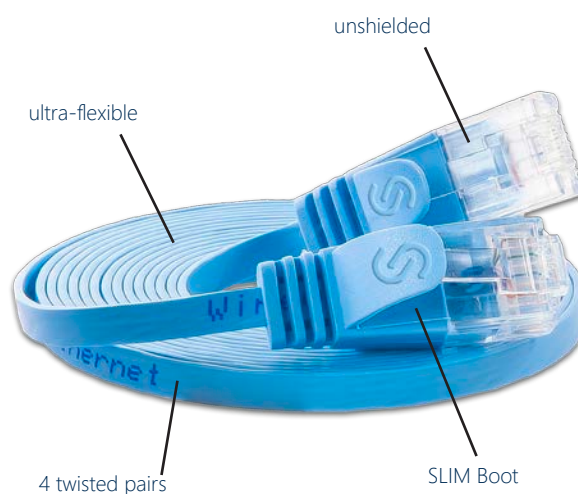
The cables comply with channel standard category 6 according to ISO/IEC and EN50173.

In addition to traditional IT applications, this cable is also ideal for special solutions where space is at a premium. There is no more flexible and space-saving Patch Cord than this variant.



### DESCRIPTION

Category	CAT6
Connector Type	RJ45
Boot	SLIM design, snap-on nose guard, Length specification
Assignment	1:1 TIA/EIA 568B
Shield	U/UTP unshielded
Sheath	PVC
Wires	AWG36 100% Copper
Dimensions	4,1 mm x 1.1 mm
Temperature range	-20°C to +60°C
Standard colours	Gray, Yellow, Orange, Red, Green, Blue, Purple, Black, White
Packaging unit	Single Unit
Standard lengths	0.1 / 0.15 / 0.25 / 0.5 / 0.75 / 1.0 / 1.5 / 2.0 / 3.0 / 5.0 / 7.5 / 10.0 / 15.0 / 20.0 / 25.0m







The comparison shows the difference.

**The dream of every IT technician, network administrator, mechatronics engineer or building systems engineer:**

- No cable clutter, cable jams, and so-called „cable management“.
- Flat and highly flexible network cables make this dream a reality.



## ORDER INFORMATION

### COLOUR

Gray  
Yellow  
Orange  
Red  
Green  
Blue  
Purple  
Black  
White

### PART NUMBER

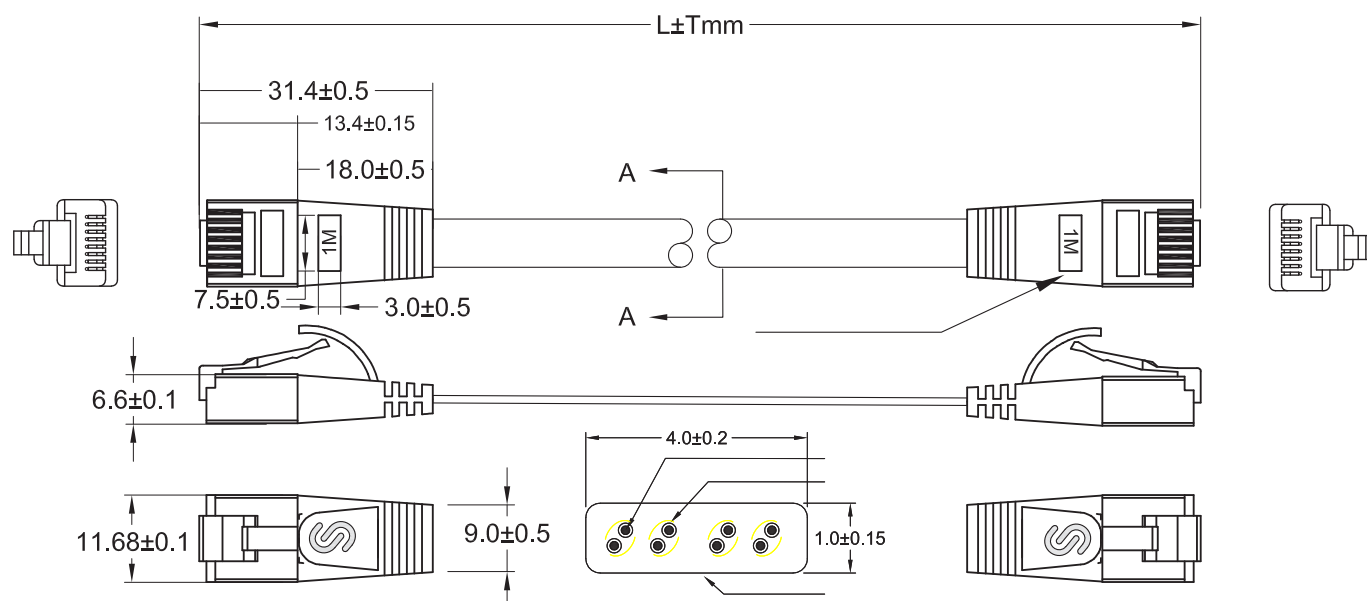
PKW-SLIM-KAT6 **x.x**  
PKW-SLIM-KAT6 **x.x** GE  
PKW-SLIM-KAT6 **x.x** OR  
PKW-SLIM-KAT6 **x.x** RT  
PKW-SLIM-KAT6 **x.x** GN  
PKW-SLIM-KAT6 **x.x** BL  
PKW-SLIM-KAT6 **x.x** VI  
PKW-SLIM-KAT6 **x.x** SW  
PKW-SLIM-KAT6 **x.x** WS

**x.x** = Length specification

Standard lengths:

0.1 / 0.15 / 0.25 / 0.5 / 0.75 / 1.0 / 1.5 / 2.0 / 3.0 / 5.0 / 10.0 / 15.0 / 20.0 / 25.0m

Custom lengths possible



## CAT6 SLIM PATCH CORD SHIELDED, FLAT



The flat, shielded, slim patch cables are pair-shielded, category 6 patch cables suitable for Gigabit Ethernet data transmission and PoE.

Despite the pair-wise shielding, mechanical flexibility is not compromised.

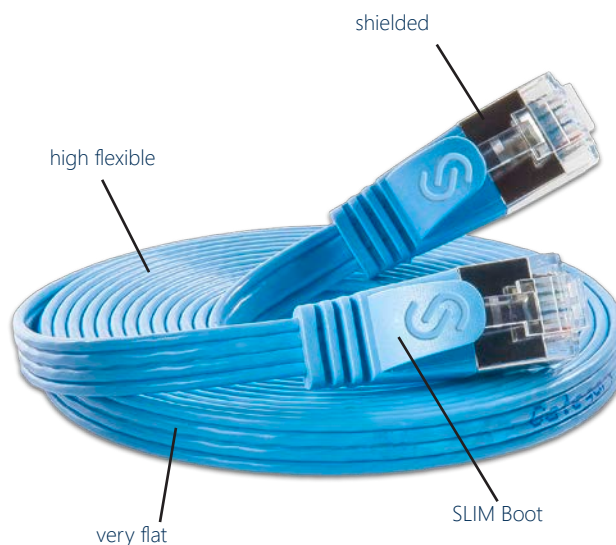
These cables are also twisted pair and shielded pair for added data transmission security.

The cables comply with the Channel Category 6 standard according to ISO/IEC and EN50173.



### DESCRIPTION

Category	CAT6
Connector Type	RJ45
Boot	SLIM design, snap-on nose guard, Length specification
Assignment	1:1 TIA/EIA 568B
Shield	U/FTP shielded
Sheath	PVC
Wires	AWG36 100% Copper
Dimensions	6.1 mm x 1.5 mm
Temperature range	-20°C to +60°C
Standard colours	Gray, Yellow, Orange, Red, Green, Blue, Purple, Black, White
Packaging unit	Single Unit
Standard lengths	0.1 / 0.15 / 0.25 / 0.5 / 0.75 / 1.0 / 1.5 / 2.0 / 3.0 / 5.0 / 7.5 / 10.0 / 15.0 / 20.0 / 25.0m





The comparison shows the difference.

**The dream of every IT technician, network administrator, mechatronics engineer or building systems engineer:**

- No cable clutter, cable jams, and so-called „cable management“.
- Flat and highly flexible network cables make this dream a reality.

## ORDER INFORMATION

### COLOUR

Gray  
Yellow  
Orange  
Red  
Green  
Blue  
Purple  
Black  
White

### PART NUMBER

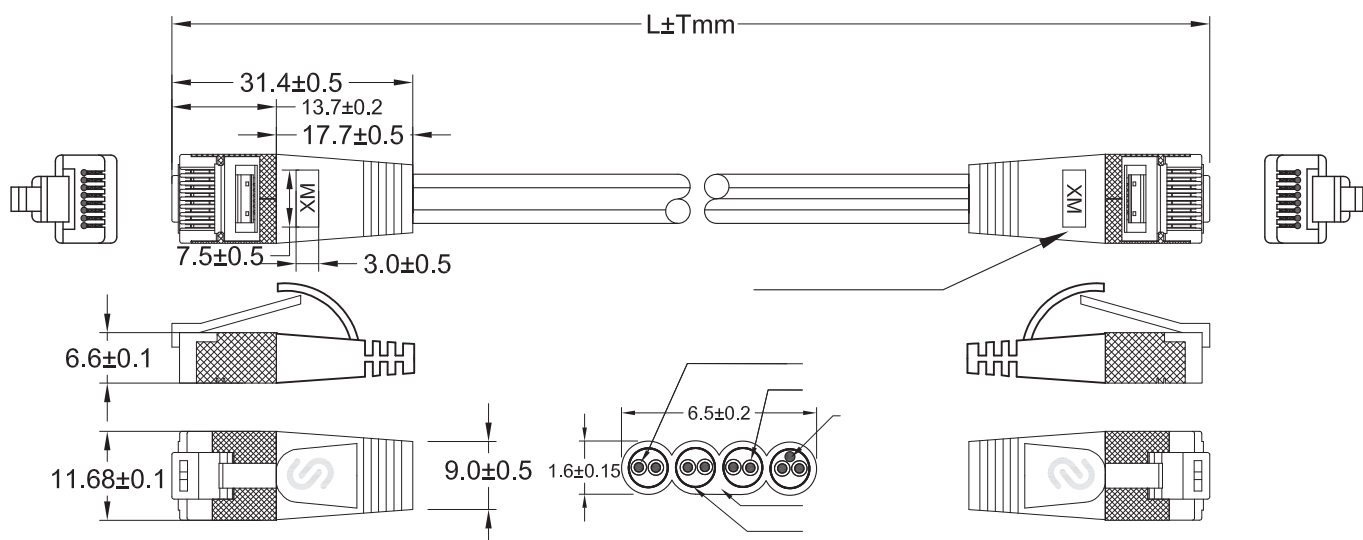
PKW-STP-SLIM-KAT6 **x.x**  
PKW-STP-SLIM-KAT6 **x.x** GE  
PKW-STP-SLIM-KAT6 **x.x** OR  
PKW-STP-SLIM-KAT6 **x.x** RT  
PKW-STP-SLIM-KAT6 **x.x** GN  
PKW-STP-SLIM-KAT6 **x.x** BL  
PKW-STP-SLIM-KAT6 **x.x** VI  
PKW-STP-SLIM-KAT6 **x.x** SW  
PKW-STP-SLIM-KAT6 **x.x** WS

**x.x** = Length specification

Standard lengths:

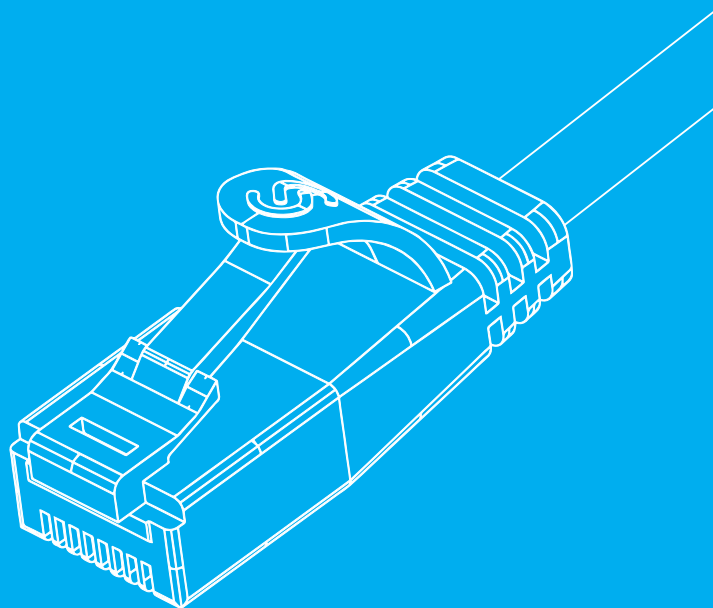
0.1 / 0.15 / 0.25 / 0.5 / 0.75 / 1.0 / 1.5 / 2.0 / 3.0 / 5.0 / 10.0 / 15.0 / 20.0 / 25.0m

Custom lengths possible



LIGHT

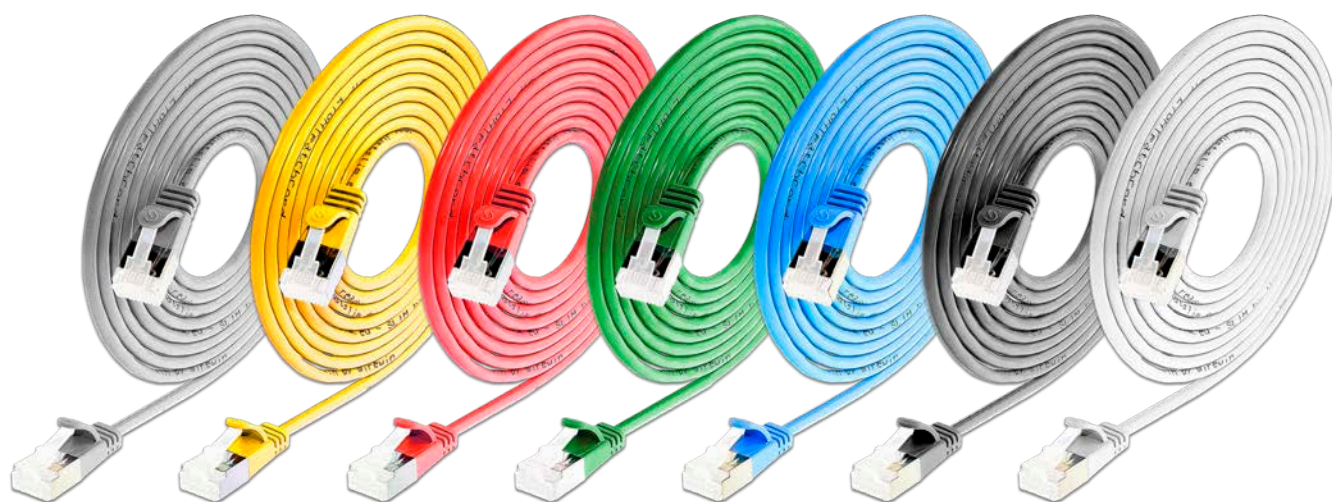




## ROUND COPPER PATCH CORDS

CAT6A SLIM PATCH CORD shielded, round	26
CAT6A SLIM PATCH CORD unshielded, round	28
CAT6 SLIM PATCH CORD unshielded, round	30
CAT6 SLIM PATCH CORD shielded, round	32
Multipack, SLIM Light	34

## CAT6<sub>A</sub> SLIM PATCH CORD SHIELDED, ROUND



The Ultimate Patch Cord Experience.

Our flagship Patch Cord is more than just a cable; it's a testament to innovation and performance. Let us surprise you with what it has to offer:

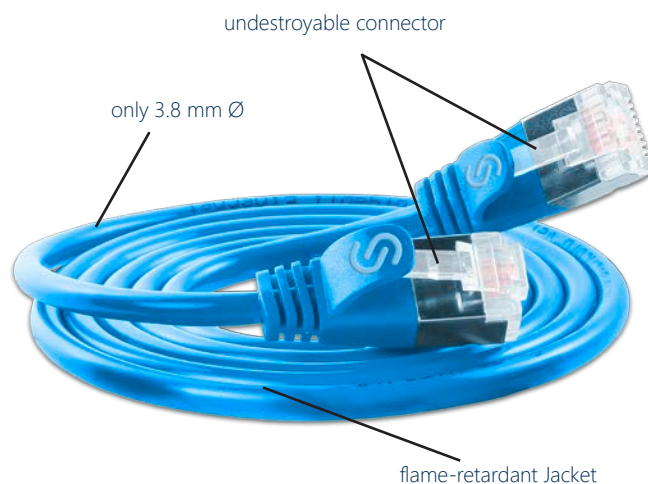
- Unrivalled flexibility
- Amazingly slim design
- Breakthrough performance: 2.5 / 5 / 10 Gbps
- Rugged shielding for uncompromised security
- Flame retardant LSZH jacket for enhanced safety

Designed to exceed expectations, our cables meet the Channel Category 6A standard of ISO/IEC and EN50173, the gold standard for network excellence. Welcome to a new era of networking with SLIM® brand CAT6A LIGHT Patch Cords. These sleek marvels redefine patching for 10 Gigabit applications with their amazingly flexible and thin design.



### DESCRIPTION

Category	CAT6A
Connector Type	RJ45
Boot	SLIM design, snap-on nose guard, Length specification
Assignment	1:1 TIA/EIA 568B
Shield	U/FTP shielded
Sheath	LSZH
Wires	AWG32 100% Copper
Diameter	3.8 mm
Temperature range	-20°C to +60°C
Standard colours	Gray, Yellow, Red, Green, Blue, Black, White
Packaging unit	Single Unit
Standard lengths	0.1 / 0.25 / 0.5 / 1.0 / 1.5 / 2.0 / 3.0 / 5.0 / 7.0m



# LIGHT



The comparison shows the difference.

**The dream of every IT technician, network administrator, mechatronics engineer or building systems engineer:**

- No cable clutter, cable jams, and so-called „cable management“.
- Highly flexible network cables make this dream a reality.



## ORDER INFORMATION

### COLOUR

Gray  
Yellow  
Red  
Green  
Blue  
Black  
White

### PART NUMBER

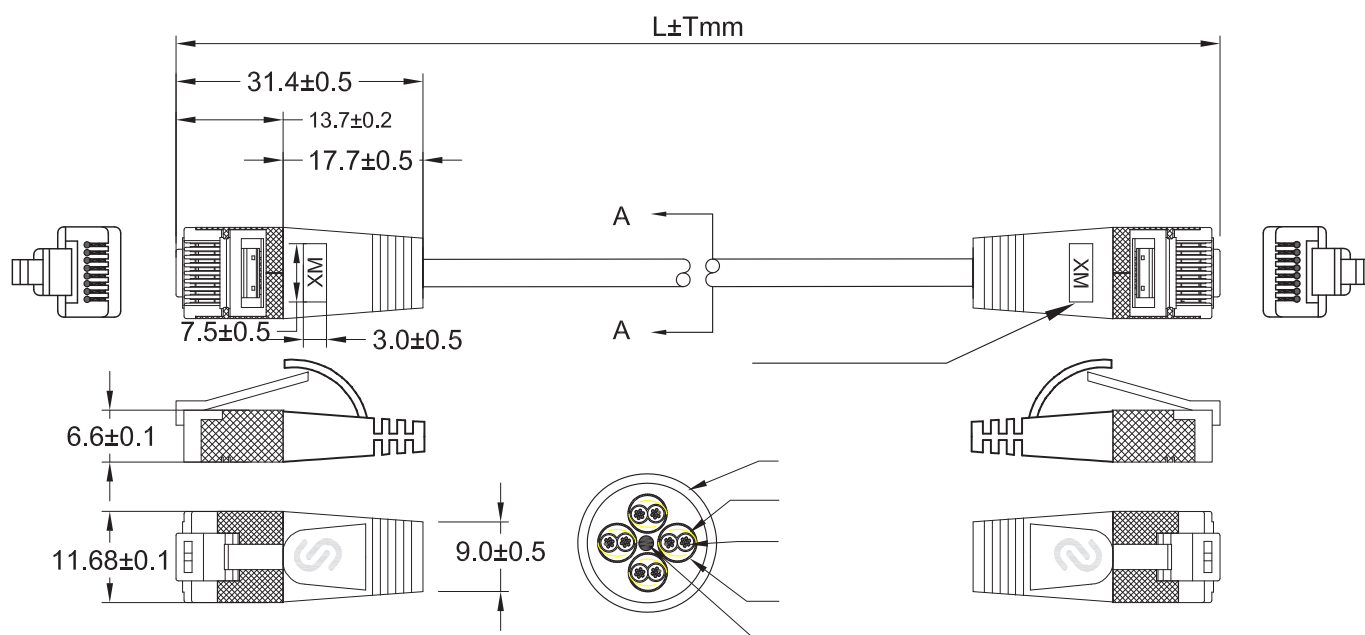
PKW-LIGHT-STP-K6A **x.x**  
PKW-LIGHT-STP-K6A **x.x** GE  
PKW-LIGHT-STP-K6A **x.x** RT  
PKW-LIGHT-STP-K6A **x.x** GN  
PKW-LIGHT-STP-K6A **x.x** BL  
PKW-LIGHT-STP-K6A **x.x** SW  
PKW-LIGHT-STP-K6A **x.x** WS

**x.x** = Length specification

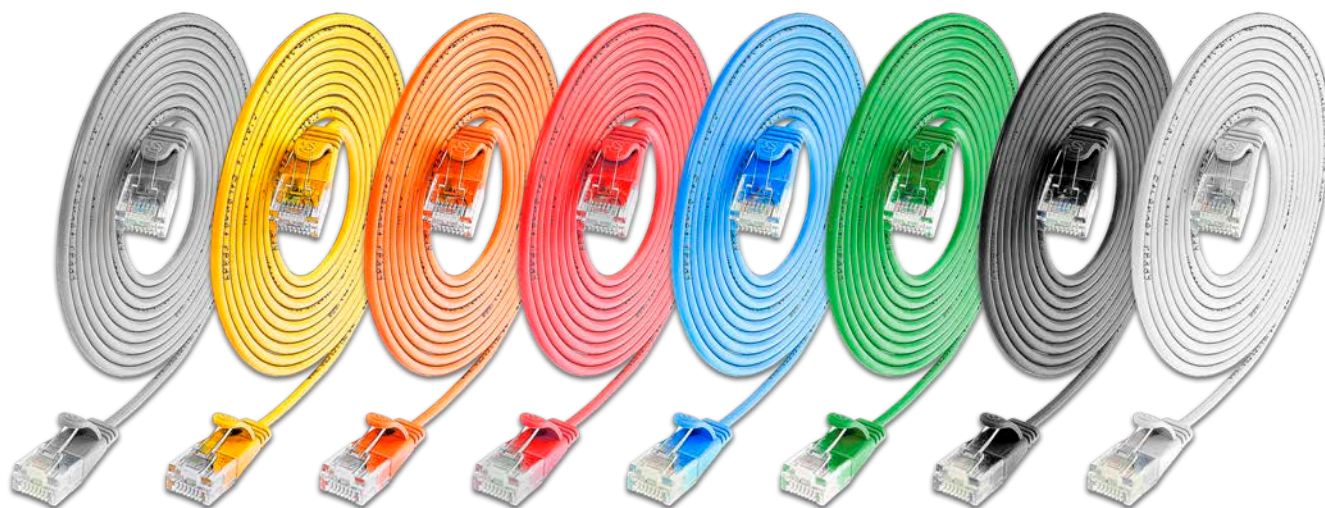
Standard lengths:

0.1 / 0.25 / 0.5 / 1.0 / 1.5 / 2.0 / 3.0 / 5.0 / 7.0m

Custom lengths possible



## CAT6<sub>A</sub> SLIM PATCH CORD UNSHIELDED, ROUND



After years of success with our flat slim Patch Cords, we can now offer the same performance in a round design.

The unshielded version with a diameter of only 2.8 mm resembles a fiber optic Patch Cord and achieves Gigabit Ethernet like its flat counterparts.

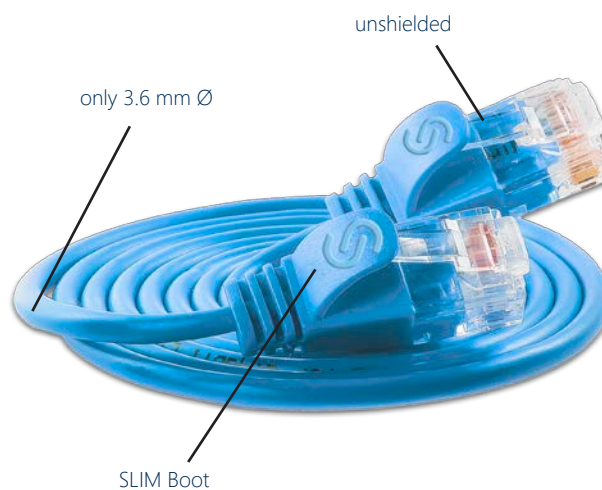
This cable enables data transmission speeds of up to 1 Gigabit Ethernet. Power-over-Ethernet according to IEEE 802.3af is also supported.

The cables comply with the ISO/IEC Category 6 channel standard and EN50173.



### DESCRIPTION

Category	CAT6
Connector Type	RJ45
Boot	SLIM design, snap-on nose guard, Length specification
Assignment	1:1 TIA/EIA 568B
Shield	U/UTP unshielded
Sheath	PVC
Wires	AWG36 100% Copper
Diameter	3.6 mm
Temperature range	-20°C to +60°C
Standard colours	Gray, Yellow, Orange, Red, Green, Blue, Black, White
Packaging unit	Single Unit
Standard lengths	0.15 / 0.5 / 1.0 / 1.5 / 2.0 / 3.0 / 5.0 / 7.0







The comparison shows the difference.

**The dream of every IT technician, network administrator, mechatronics engineer or building systems engineer:**

- No cable clutter, cable jams, and so-called „cable management“.
- Highly flexible network cables make this dream a reality.

## ORDER INFORMATION

### COLOUR

Gray  
Black  
Blue  
Green  
Orange  
Red  
White  
Yellow

### PART NUMBER

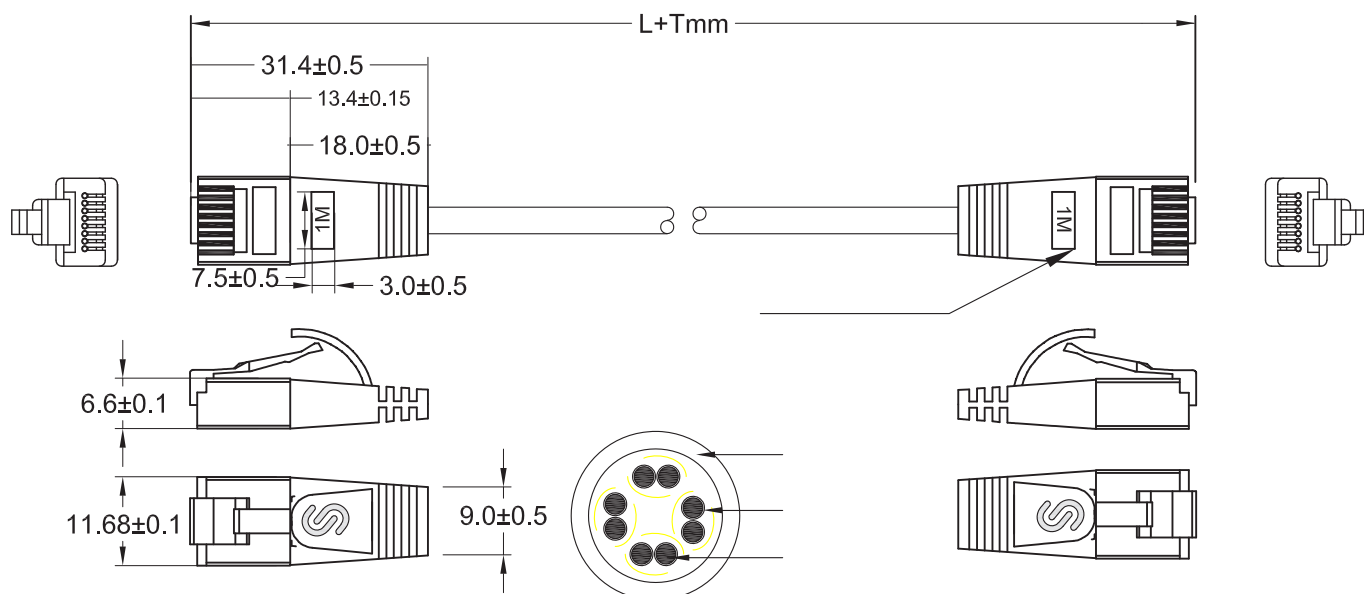
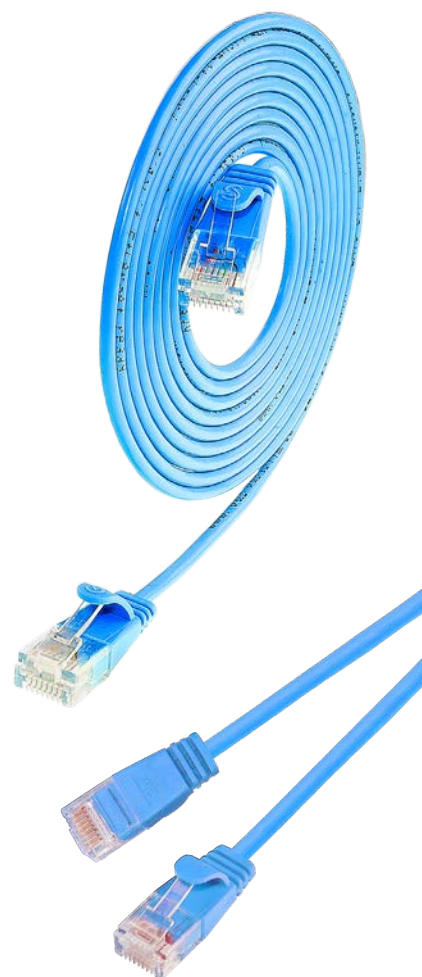
SLIM-LU-K6A **x.x**  
SLIM-LU-K6A **x.x** BK  
SLIM-LU-K6A **x.x** BL  
SLIM-LU-K6A **x.x** GN  
SLIM-LU-K6A **x.x** OR  
SLIM-LU-K6A **x.x** RD  
SLIM-LU-K6A **x.x** WT  
SLIM-LU-K6A **x.x** YE

**x.x** = Length specification

Standard lengths:

0.1 / 0.15 / 0.25 / 0.35 / 0.5 / 1.0 / 1.5 / 2.0 / 3.0 / 5.0 / 7.0m

Custom lengths possible



## CAT6 SLIM PATCH CORD UNSHIELDED, ROUND



After years of success with our flat, slim Patch Cords, we can now offer the same performance in a round design.

With a diameter of only 2.8mm, the unshielded version resembles a fiber optic Patch Cord and achieves Gigabit Ethernet like its flat counterparts.

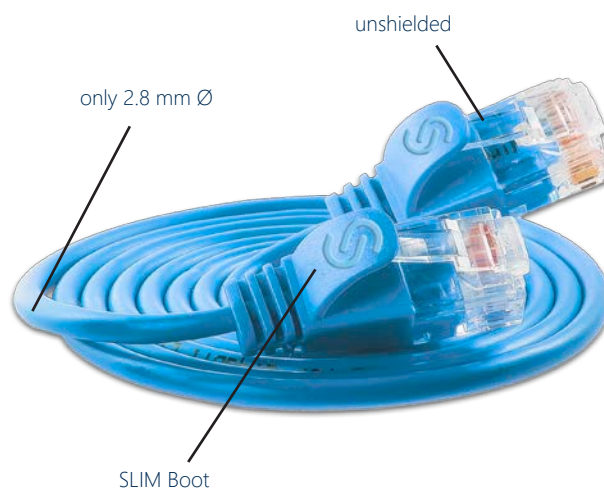
This cable enables data transmission speeds of up to 1 Gigabit Ethernet. Power-over-Ethernet according to IEEE 802.3af is also supported.

The cables comply with the ISO/IEC Category 6 channel standard and EN50173.



### DESCRIPTION

Category	CAT6
Connector Type	RJ45
Boot	SLIM design, snap-on nose guard, Length specification
Assignment	1:1 TIA/EIA 568B
Shield	U/UTP unshielded
Sheath	PVC
Wires	AWG36 100% Copper
Diameter	2.8 mm
Temperature range	-20°C to +60°C
Standard colours	Gray, Yellow, Orange, Red, Green, Blue, Black, White
Packaging unit	Single Unit
Standard lengths	0.15 / 0.5 / 1.0 / 1.5 / 2.0 / 3.0 / 5.0 / 7.5 / 10.0m

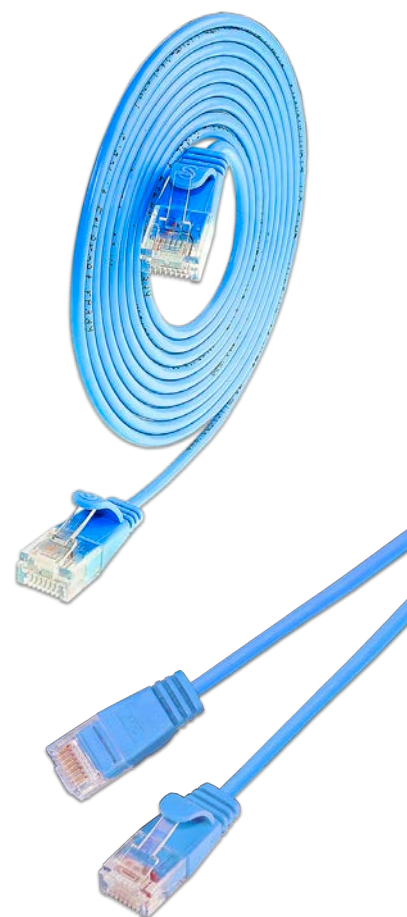




The comparison shows the difference.

**The dream of every IT technician, network administrator, mechatronics engineer or building systems engineer:**

- No cable clutter, cable jams, and so-called „cable management“.
- Highly flexible network cables make this dream a reality.



## ORDER INFORMATION

### COLOUR

Gray

Yellow

Orange

Red

Green

Blue

Black

White

### PART NUMBER

PKW-LIGHT-K6 **x.x**

PKW-LIGHT-K6 **x.x** GE

PKW-LIGHT-K6 **x.x** OR

PKW-LIGHT-K6 **x.x** RT

PKW-LIGHT-K6 **x.x** GN

PKW-LIGHT-K6 **x.x** BL

PKW-LIGHT-K6 **x.x** SW

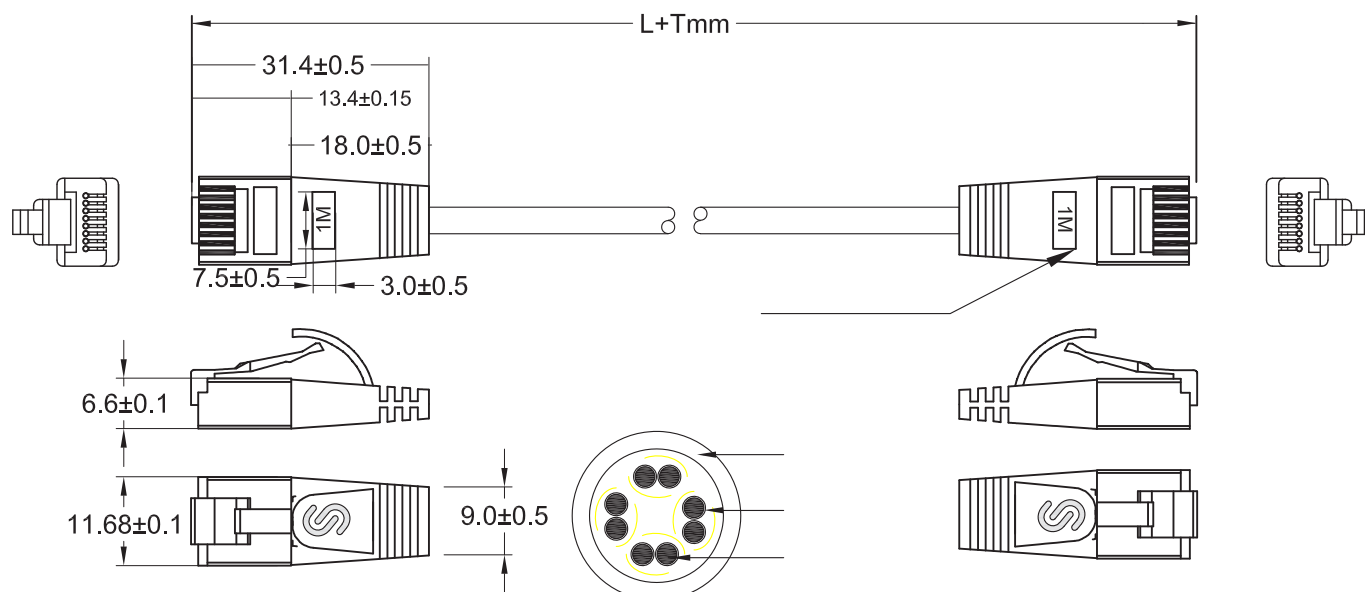
PKW-LIGHT-K6 **x.x** WS

**x.x** = Length specification

Standard lengths:

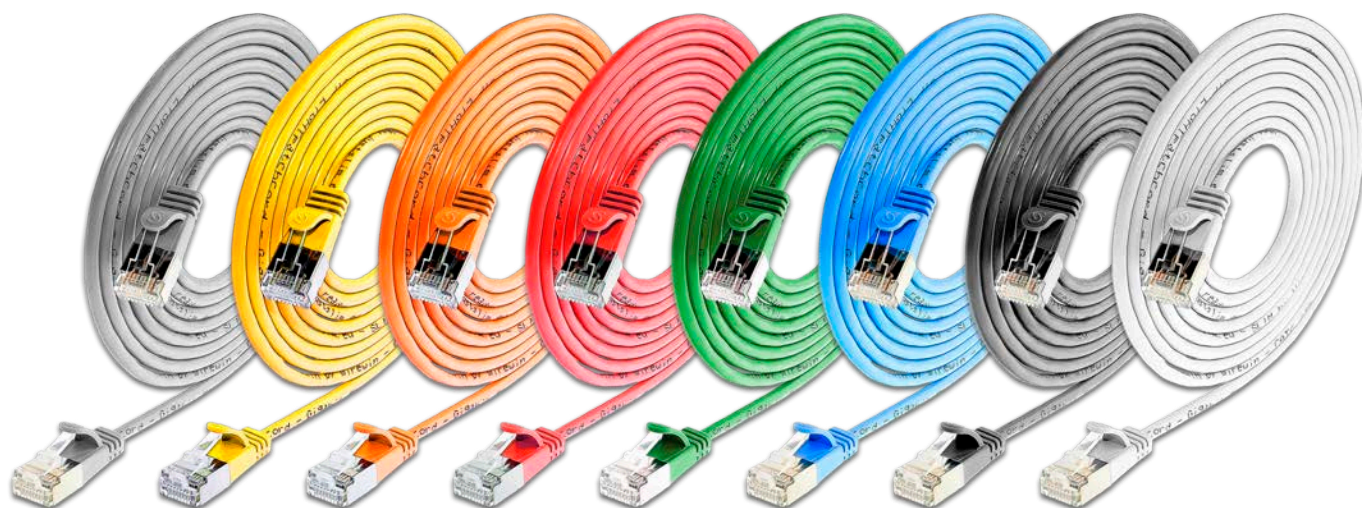
0.15 / 0.5 / 1.0 / 1.5 / 2.0 / 3.0 / 5.0 / 7.5 / 10.0m

Custom lengths possible





## CAT6 SLIM PATCH CORD SHIELDED, ROUND



Enhance your connectivity with our state-of-the-art solution: a seamless blend of elegance and performance. Discover our latest innovation—a cable that combines a timeless, round design with the robust protection of full, pair-by-pair shielding. Its sleek 3.8mm outer diameter surpasses all expectations, offering you a harmonious fusion of form and function.

IEEE 802.3af compliant Power over Ethernet support ensures uninterrupted power so you can look to the future with confidence.

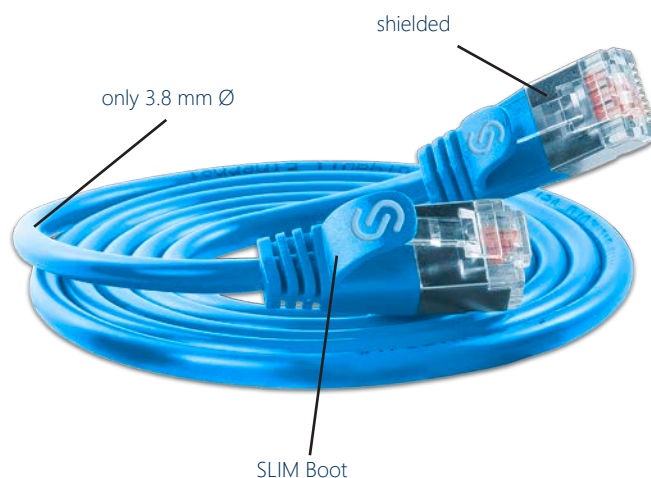
Built to the highest standards, these cables meet ISO/IEC and EN50173 Channel Category 6 standards for reliability and performance.

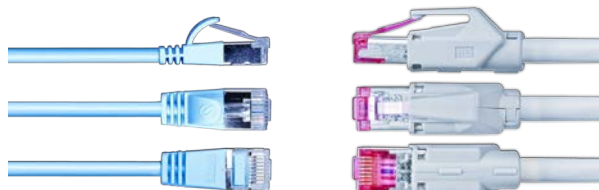
Upgrade your connectivity today—redefine what's possible with a cable designed for high performance.



### DESCRIPTION

Category	CAT6
Connector Type	RJ45
Boot	SLIM design, snap-on nose guard, Length specification
Assignment	1:1 TIA/EIA 568B
Shield	U/FTP shielded
Sheath	PVC
Wires	AWG32 100% Copper
Diameter	3.8 mm
Temperature range	-20°C to +60°C
Standard colours	Gray, Yellow, Orange, Red, Green, Blue, Black, White
Packaging unit	Single Unit
Standard lengths	0.15 / 0.25 / 0.5 / 1.0 / 1.5 / 2.0 / 3.0 / 5.0 / 7.5 / 10.0 / 15.0 / 20.0m





The comparison shows the difference.

**The dream of every IT technician, network administrator, mechatronics engineer or building systems engineer:**

- No cable clutter, cable jams, and so-called „cable management“.
- Highly flexible network cables make this dream a reality.



## ORDER INFORMATION

### COLOUR

Gray  
Yellow  
Orange  
Red  
Green  
Blue  
Black  
White

### PART NUMBER

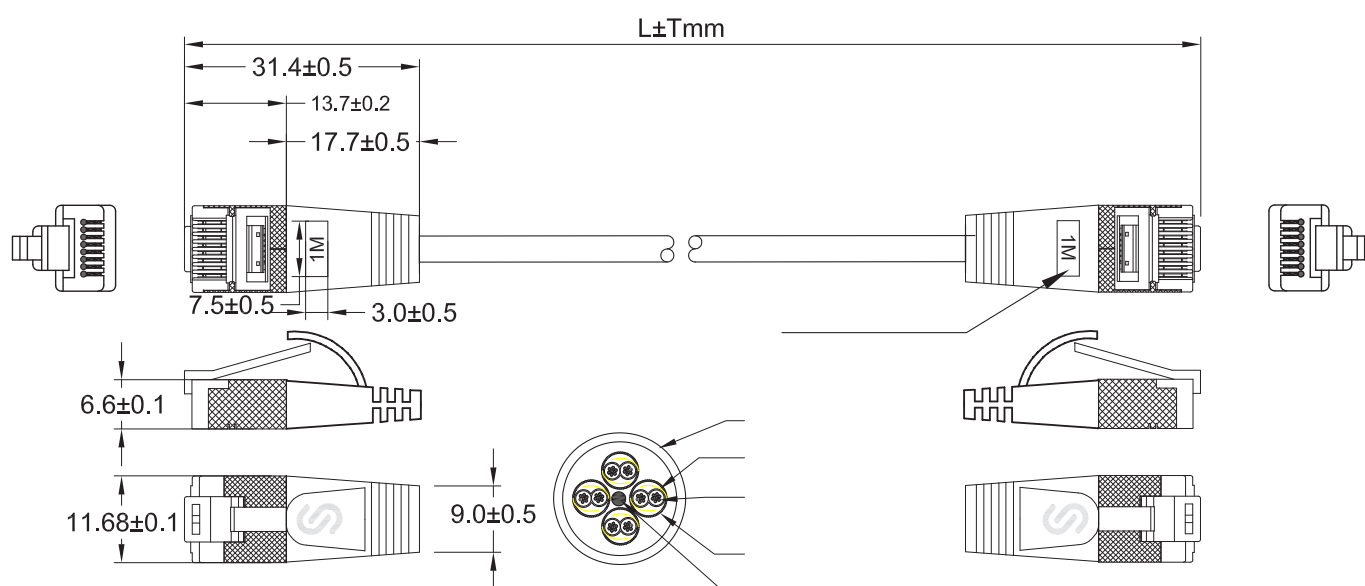
PKW-LIGHT-STP-K6 **x.x**  
PKW-LIGHT-STP-K6 **x.x** GE  
PKW-LIGHT-STP-K6 **x.x** OR  
PKW-LIGHT-STP-K6 **x.x** RT  
PKW-LIGHT-STP-K6 **x.x** GN  
PKW-LIGHT-STP-K6 **x.x** BL  
PKW-LIGHT-STP-K6 **x.x** SW  
PKW-LIGHT-STP-K6 **x.x** WS

**x.x** = Length specification

Standard lengths:

0.15 / 0.25 / 0.5 / 1.0 / 1.5 / 2.0 / 3.0 / 5.0 / 7.5 / 10.0 / 15.0 / 20.0m

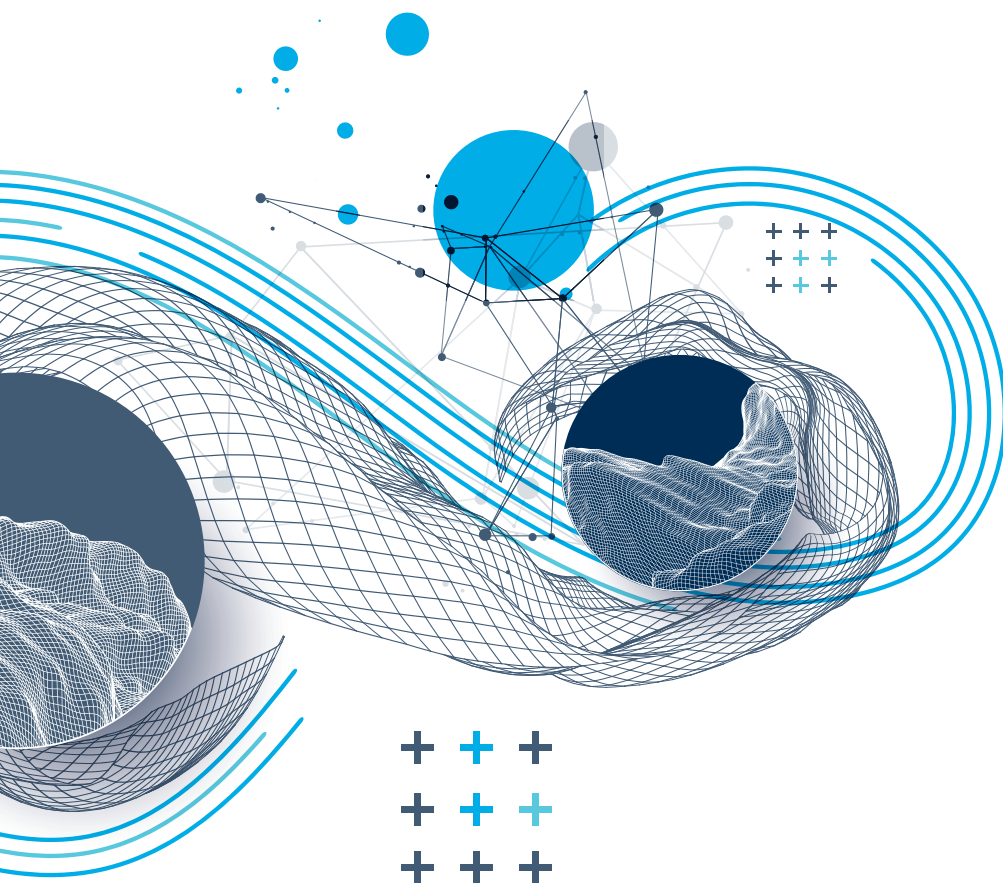
Custom lengths possible



## MULTIPACK, SLIM LIGHT

NEW

MULTIPACKS	GRAY	BLACK	BLUE
Multipack, SLIM Light, 0.1m, 50 pieces	SLIM-LS-K6A 0.1 50	SLIM-LS-K6A 0.1 50 BK	SLIM-LS-K6A 0.1 50 BI
Multipack, SLIM Light, 0.15m, 50 pieces	SLIM-LS-K6A 0.15 50	SLIM-LS-K6A 0.15 50 BK	SLIM-LS-K6A 0.15 50 BI
Multipack, SLIM Light, 0.25m, 50 pieces	SLIM-LS-K6A 0.25 50	SLIM-LS-K6A 0.25 50 BK	SLIM-LS-K6A 0.25 50 BI
Multipack, SLIM Light, 0.35m, 90 pieces	SLIM-LS-K6A 0.35 90	SLIM-LS-K6A 0.35 90 BK	SLIM-LS-K6A 0.35 90 BI
Multipack, SLIM Light, 0.5m, 90 pieces	SLIM-LS-K6A 0.5 90	SLIM-LS-K6A 0.5 90 BK	SLIM-LS-K6A 0.5 90 BI
Multipack, SLIM Light, 1.0m, 90 pieces	SLIM-LS-K6A 1.0 90	SLIM-LS-K6A 1.0 90 BK	SLIM-LS-K6A 1.0 90 BI
Multipack, SLIM Light, 1.5m, 60 pieces	SLIM-LS-K6A 1.5 60	SLIM-LS-K6A 1.5 60 BK	SLIM-LS-K6A 1.5 60 BI
Multipack, SLIM Light, 2.0m, 60 pieces	SLIM-LS-K6A 2.0 60	SLIM-LS-K6A 2.0 60 BK	SLIM-LS-K6A 2.0 60 BI
Multipack, SLIM Light, 3.0m, 36 pieces	SLIM-LS-K6A 3.0 36	SLIM-LS-K6A 3.0 36 BK	SLIM-LS-K6A 3.0 36 BI



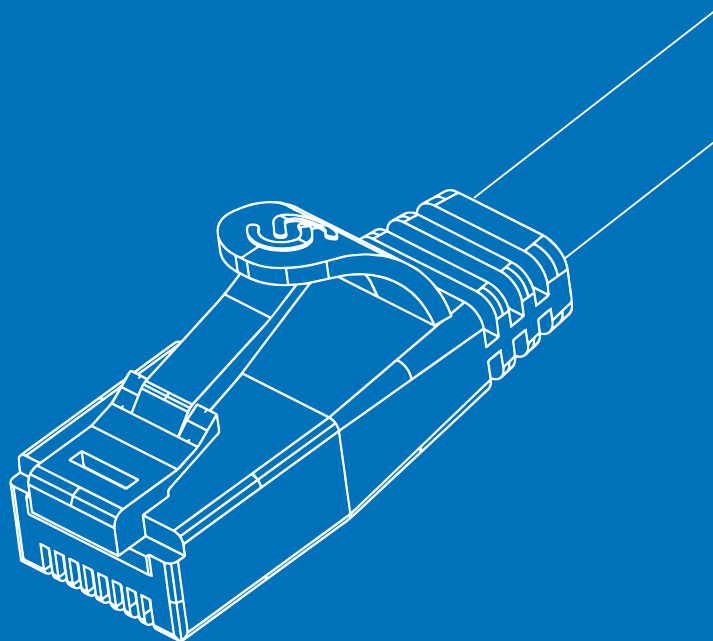
LIGHT



GREEN	ORANGE	RED	WHITE	YELLOW
SLIM-LS-K6A 0.1 50 GN	SLIM-LS-K6A 0.1 50 OR	SLIM-LS-K6A 0.1 50 RD	SLIM-LS-K6A 0.1 50 WT	SLIM-LS-K6A 0.1 50 YE
SLIM-LS-K6A 0.15 50 GN	SLIM-LS-K6A 0.15 50 OR	SLIM-LS-K6A 0.15 50 RD	SLIM-LS-K6A 0.15 50 WT	SLIM-LS-K6A 0.15 50 YE
SLIM-LS-K6A 0.25 50 GN	SLIM-LS-K6A 0.25 50 OR	SLIM-LS-K6A 0.25 50 RD	SLIM-LS-K6A 0.25 50 WT	SLIM-LS-K6A 0.25 50 YE
SLIM-LS-K6A 0.35 90 GN	SLIM-LS-K6A 0.35 90 OR	SLIM-LS-K6A 0.35 90 RD	SLIM-LS-K6A 0.35 90 WT	SLIM-LS-K6A 0.35 90 YE
SLIM-LS-K6A 0.5 90 GN	SLIM-LS-K6A 0.5 90 OR	SLIM-LS-K6A 0.5 90 RD	SLIM-LS-K6A 0.5 90 WT	SLIM-LS-K6A 0.5 90 YE
SLIM-LS-K6A 1.0 90 GN	SLIM-LS-K6A 1.0 90 OR	SLIM-LS-K6A 1.0 90 RD	SLIM-LS-K6A 1.0 90 WT	SLIM-LS-K6A 1.0 90 YE
SLIM-LS-K6A 1.5 60 GN	SLIM-LS-K6A 1.5 60 OR	SLIM-LS-K6A 1.5 60 RD	SLIM-LS-K6A 1.5 60 WT	SLIM-LS-K6A 1.5 60 YE
SLIM-LS-K6A 2.0 60 GN	SLIM-LS-K6A 2.0 60 OR	SLIM-LS-K6A 2.0 60 RD	SLIM-LS-K6A 2.0 60 WT	SLIM-LS-K6A 2.0 60 YE
SLIM-LS-K6A 3.0 36 GN	SLIM-LS-K6A 3.0 36 OR	SLIM-LS-K6A 3.0 36 RD	SLIM-LS-K6A 3.0 36 WT	SLIM-LS-K6A 3.0 36 YE



TOUGH



## **NYLON REINFORCED COPPER PATCH CORD**

CAT6 SLIM PATCH CORD unshielded, with reinforced nylon jacket\_\_\_\_\_ **38**

CAT6 SLIM PATCH CORD shielded, with reinforced nylon jacket\_\_\_\_\_ **40**



## CAT 6 SLIM PATCH CORD UNSHIELDED, WITH REINFORCED NYLON JACKET



Discover a new level of ruggedness with our TOUGH Patch Cords - an embodiment of strength in a sleek profile. Like a hidden force, these cables embody the essence of SLIM Patch Cords, reinforced with an extra layer of nylon armor that increases their mechanical strength.

Designed to meet the challenges of demanding environments and field technician use, TOUGH patch cords prove their durability and reliability. Explore the unshielded version, a convergence of SLIM UTP cable finesse with a rugged nylon jacket that encapsulates resiliency in every strand.

Meticulously engineered to the Channel Category 6 standard in accordance with ISO/IEC and EN50173, these cables promise unwavering performance. Enhance your connectivity with TOUGH Patch Cords-where ruggedness meets sophistication and strength knows no compromise.



### DESCRIPTION

Category	CAT6
Connector Type	RJ45
Boot	SLIM design, snap-on nose guard,
	Length specification
Assignment	1:1 TIA/EIA 568B
Shield	U/UTP unshielded
Sheath	PVC
Wires	AWG36 100% Copper
Dimensions	4.6 mm x 1.6 mm
Temperature range	-20°C to +60°C
Standard colours	Gray, Yellow, Orange, Red, Green, Blue
Packaging unit	Single Unit
Standard lengths	0.25 / 0.5 / 1.0 / 2.0 / 3.0 / 5.0 / 10.0m



# TOUGH



The comparison shows the difference

**The dream of every IT technician, network administrator, mechatronics engineer or building systems engineer:**

- No cable clutter, cable cramming, and so-called „cable management“.
- Flat and highly flexible network cables make this dream a reality.



## ORDERING INFORMATION

### COLOUR

Grey  
Yellow  
Red  
Green  
Blue

### PRODUCT NUMBER

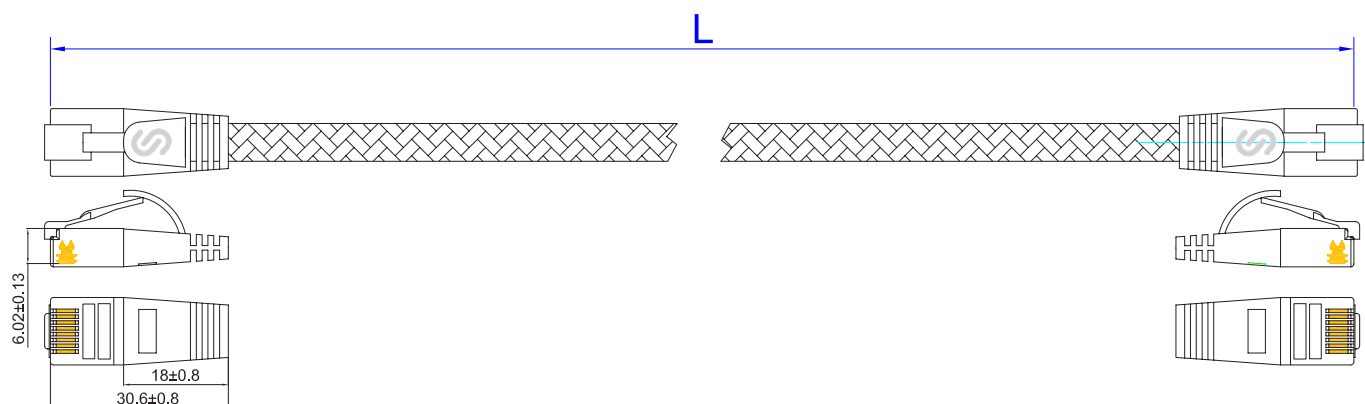
PKW-TOUGH-K6 **x.x**  
PKW-TOUGH-K6 **x.x** GE  
PKW-TOUGH-K6 **x.x** RT  
PKW-TOUGH-K6 **x.x** GN  
PKW-TOUGH-K6 **x.x** BL

**x.x** = Length Specification

Standard Lengths

0.25 / 0.5 / 1.0 / 2.0 / 3.0 / 5.0 / 10.0m

Custom Lengths Possible



## CAT6 SHIELDED SLIM PATCH CORD, WITH REINFORCED NYLON JACKET



Introducing TOUGH Patch Cords: the embodiment of internal finesse, reinforced by an external shielding. Born from the essence of SLIM Patch Cords, these marvels are reinforced with an additional nylon jacket, forging a bond of mechanical might.

In the realm of rugged domains and the dynamic landscapes navigated by field technicians, TOUGH Patch Cords emerge as a beacon of unwavering reliability. Enter the unshielded variety, where the ingenuity of SLIM UTP cable meets the rugged embrace of nylon to create a symphony of strength and precision.

Meticulously engineered to meet the Channel Category 6 standard of ISO/IEC and EN50173, these cables are built to last. Elevate your connectivity with TOUGH Patch Cords, where toughness meets finesse, and your network strides confidently into any challenge.



### DESCRIPTION

Category	CAT6
Connector	RJ45
Boot	SLIM Design, Latch Protection, Length in m
Occupancy	1:1 TIA/EIA 568B
Shield	U/FTP shielded
Sheath	PVC
Wires	AWG36 100% copper
Cable dimensions	6.6 mm x 2.0 mm
Temperature range	-20°C to +60°C
Standard colours	Gray, Yellow, Red, Green, Blue
Packaging unit	Single Unit
Standard lengths	0.25 / 0.5 / 1.0 / 2.0 / 3.0 / 5.0 / 10.0m



# TOUGH



The comparison shows the difference

**The dream of every IT technician, network administrator, mechatronics engineer or building systems engineer:**

- No cable clutter, cable jams, and so-called „cable management.
- Flat and highly flexible network cables make this dream a reality.



## ORDERING INFORMATION

### COLOUR

Grey  
Yellow  
Red  
Green  
Blue

### PRODUCT NUMBER

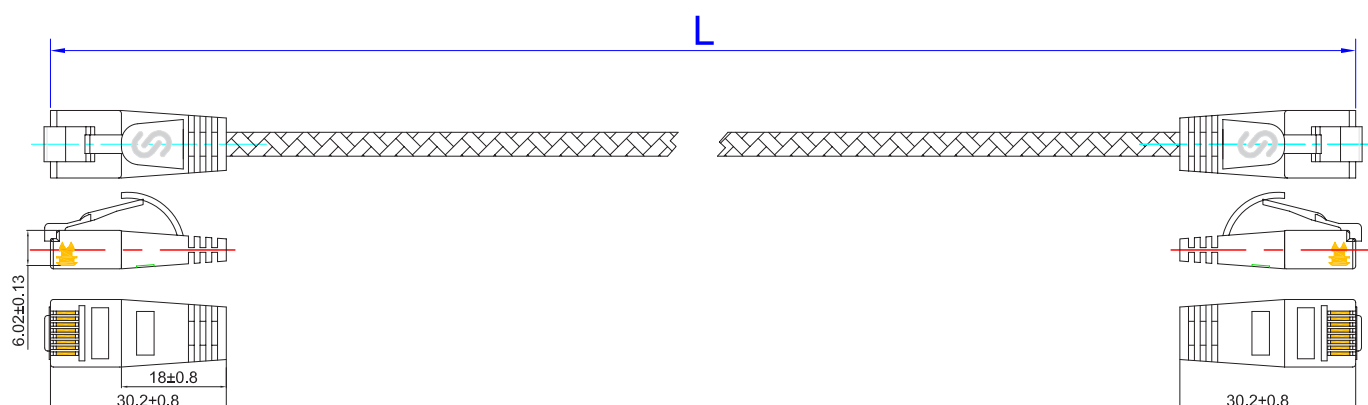
PKW-TOUGH-STP-K6 **x.x**  
PKW-TOUGH-STP-K6 **x.x** GE  
PKW-TOUGH-STP-K6 **x.x** RT  
PKW-TOUGH-STP-K6 **x.x** GN  
PKW-TOUGH-STP-K6 **x.x** BL

**x.x** = Length Specification

Standard Lengths

0.25 / 0.5 / 1.0 / 2.0 / 3.0 / 5.0 / 10.0m

Custom Lengths Possible





**SMALL  
IS THE NEW  
BIG**







T: +43 31 72 / 4 22 99-0  
F: +43 31 72 / 4 22 99-11



Energiestraße 10  
8160 Weiz  
Austria



[office@triotronik.com](mailto:office@triotronik.com)  
[www.triotronik.com](http://www.triotronik.com)