

Just
Slim



The original Slimpatchcord
www.justslim.eu



statement



“Making patch cables more innovative and easier for our customers has been our motivation since the first cable in 2004! Since then, we have continued to develop our SLIM cables.”

The SLIM™ project was born out of our customers’ needs and our expertise. The long-standing problem of chaos in server racks had driven some to despair. We used our knowledge and experience to improve the design. As a result, our high performance SLIM cables have become a innovative alternative to traditional patch cables.



**THOMAS
THIR-GREITER
CEO**

A lot has changed since the idea of developing thinner and more flexible cables was born in 2003.

We were the first to introduce a high-quality, standards-compliant SLIM patch cable.

Since then, we have continued to expand our product line. Today we offer several product categories and custom solutions centered around thinner and more flexible patch cables!



Customers

Hundreds of customers in over 70 countries trust our cables.



Development

Sold and deployed millions of times in data centers, industrial environments, and traditional IT.



Products

1 Gigabit or 10 Gigabit, no problem for our SLIM patch cables. Customized solutions are also possible.

FREE SAMPLE

Enter the following link or simply scan the QR code to request your free sample of our SLIM patch cables.

www.justslim.eu/en/



BEFORE

Your server rack doesn't have to look like this!

Keep everything under control with our SLIM patch cables.

SLIM cables are inherently more flexible than standard cables - say goodbye to rigid cables.

Not only are they thin and flexible, they are also powerful. Fast data transmission is guaranteed. We guarantee compliance with internationally recognized cabling standards. Even Power-over-Ethernet is possible!



AFTER



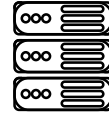
Flexible

SLIM Patch Cables are the most flexible and thinnest patch cables on the market.

10Gbit

Ethernet

Cables available for up to 10 Gigabit Ethernet.



Save Space

Significant **space reduction** in the network rack.



Efficiency

Their flexibility allows a neat arrangement of the cables in the rack, which enables easy access and more efficient work.

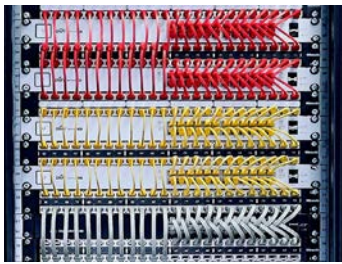


WHY SLIM?

- World's thinnest patch cable
- Much more rack space
- Very short plug
- Extremely flexible
- Suitable for 1 and 10 Gigabit Ethernet
- Suitable for Power-over-Ethernet

COMPARISON

SLIM LIGHT UTP	SLIM LIGHT STP	SLIM LIGHT STP CAT6 _A	SLIM UTP	SLIM STP	SLIM STP CAT6 _A	Standard STP
----------------------	----------------------	--	-------------	-------------	-------------------------------	-----------------



**HIGH DENSITY
SWITCHES**



PATCHING



**DESKTOP
WIRING**



NOTEBOOK

S
SLIM

**SMALL
IS THE NEW
BIG**



MEANINGFUL FEATURES CLEAR ADVANTAGES

Because practical utility matters.

STRUCTURE & ORDER



Not only pleasing to the eye: Thin cables, multiple colors and custom lengths help to keep the switch or server rack organized.

This not only simplifies and speeds up troubleshooting, but also makes installation easier.

FLAME-RETARDANT JACKET MATERIAL



Even more security and a must for public institutions. Available with the round CAT6A variant.

MORE CABLE IN LESS SPACE



With an increasing number of cables, it's easy for things to get tangled. The solution:

SLIM patch cables are 1/6 the height and about 1/4 the diameter of a standard patch cable.

So your network cabinet doesn't turn into a tangle of cables.



INDESTRUCTIBLE JACK

There's nothing more frustrating than having to replace an entire cable just because the jack/plug is broken. That's why we designed our special indestructible jack/plug, so you don't have to worry about that with SLIM patch cables.



LATEST TECHNICAL STANDARDS

Slimmer, but not weaker. The SLIM patch cable achieves up to 10 Gigabit Ethernet with twisted pairs. It is also Power-over-Ethernet compatible.



FLEXIBLE ALL ALONG THE LINE

Our SLIM cables are not only exceptionally flexible, but also resilient.

The thinnest SLIM cables can easily accommodate bending radius of <2mm, and the heavy-duty TOUGH cables allow you to carry the right cable in your laptop bag.



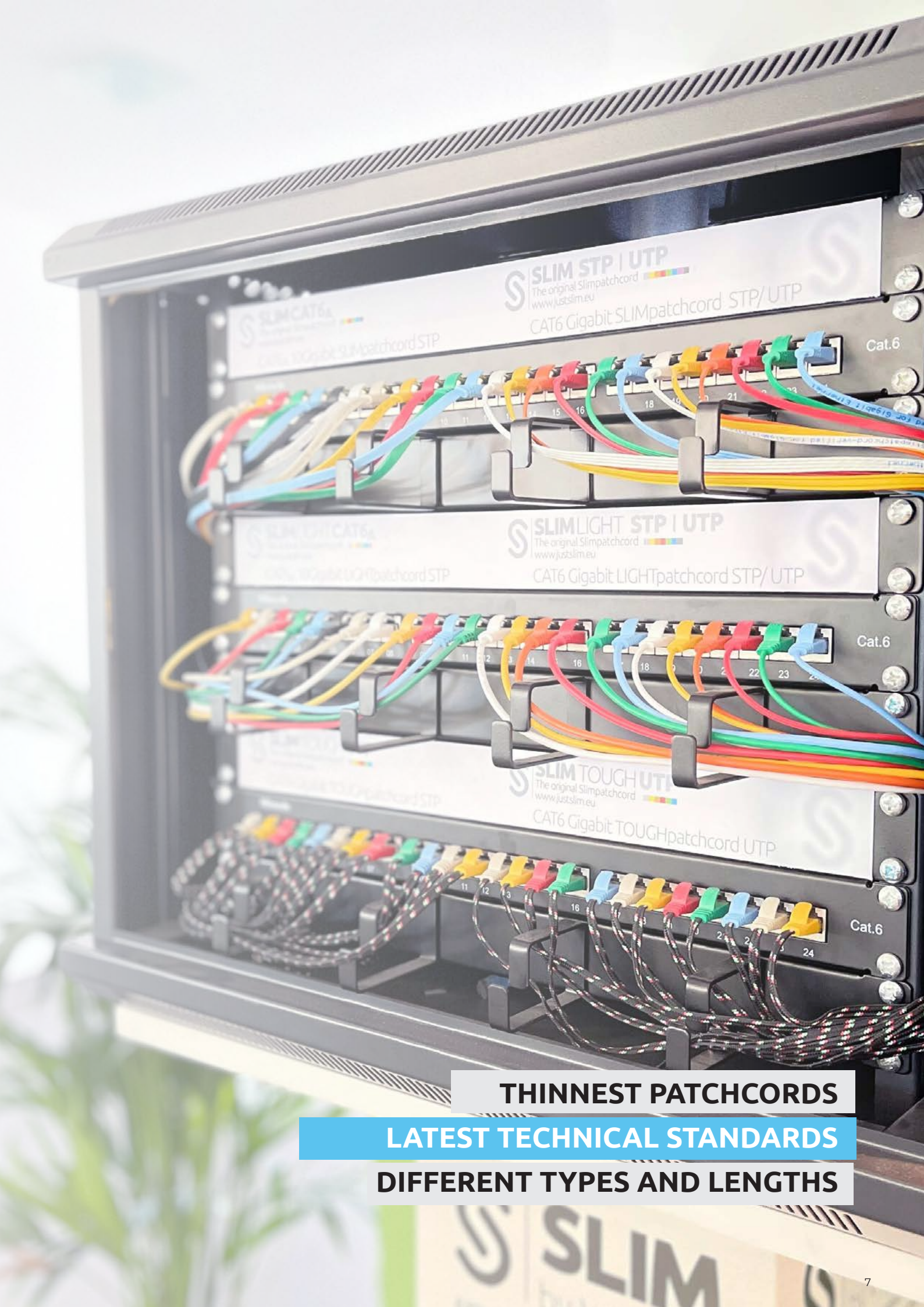
MANY CHALLENGES ONE SOLUTION

The best-case scenario: One product to solve many problems.

The dream of every IT technician, network administrator, mechatronics engineer, or building systems engineer: No cable spaghetti, cable clutter and cable management. This dream becomes true with flat and highly flexible network cables.

Convince yourself!

6 TIMES THINNER	10 GIGABIT	FLEXIBLE	100% COPPER	INDIVIDUAL
than a conventional patch cable	Ethernet and PoE-compatible	90° bending radius	High-quality copper wires	9 colours 14 lengths 6 types



SLIM CAT6
The original Slimpatchcord
www.justslim.eu
CAT6 Gigabit SLIMpatchcord STP/UTP

SLIM LIGHT CAT6
The original Slimpatchcord
www.justslim.eu
CAT6 Gigabit LIGHTpatchcord STP/UTP

SLIM TOUGH UTP
The original Slimpatchcord
www.justslim.eu
CAT6 Gigabit TOUGHpatchcord UTP

THINNEST PATCHCORDS
LATEST TECHNICAL STANDARDS
DIFFERENT TYPES AND LENGTHS

SLIM

SLIM



CAT6

SLIM UTP | STP
The original Slimpatchcord  |
www.justslim.eu

This type of cable was our first development in 2004. Since then, it has been sold millions of times and remains a very popular choice.

The cable is designed for 1 Gigabit Ethernet. It consists of 4 twisted pairs with the thinnest possible copper diameter, allowing for an extremely slim and highly flexible construction.

Despite the slim design, Power-over-Ethernet according to IEEE 802.3af is also possible. The cables comply with the Channel Category 6 standard according to ISO/IEC and EN50173.

In addition to classic IT applications, this cable is also perfect for special solutions where space is limited. There is no patch cable more flexible and space-saving than this variant.



LIGHT



CAT6

SLIMLIGHT UTP | STP
The original Slimpatchcord  |
www.justslim.eu

Due to high customer demand, we have developed a round cable with the appropriate performance.

The unshielded version of the round LIGHT patch cable is the thinnest round patch cable with a slim construction of only 2.8 mm.

This cable enables data transmission speeds of up to 1 Gigabit Ethernet. Power-over-Ethernet according to IEEE 802.3af is also supported.

The cables comply with the Channel Category 6 standard according to ISO/IEC and EN50173.



TOUGH



CAT6

SLIM TOUGH UTP | STP
The original Slimpatchcord  |
www.justslim.eu

TOUGH patch cables are essentially SLIM patch cables on the inside, but with an additional nylon jacket to increase their mechanical strength.

These cables are ideal for more demanding environments or for field technicians.

The unshielded variant combines all the advantages of SLIM UTP cables with the rugged nylon jacket.

The cables comply with the Channel Category 6 standard according to ISO/IEC and EN50173.



SLIM



CAT6A 10GBit



Although 10 Gigabit applications have significantly higher technical requirements than 1 Gigabit, we also offer a flat patch cable variant for the next speed generation.

But also for the next speed generation we have a flat patch cable variant.

This cable type can be used for 2.5Gbit, 5Gbit and 10Gbit applications.

Each pair is shielded. The cables comply with the Channel Category 6A standard according to ISO/IEC and EN50173.



LIGHT



CAT6A 10Gbit



The flagship of our patch cables.

This cable has it all.

- High flexibility
- Extremely slim design
- Performance for 2.5 / 5 / 10 Gbit
- Shielding
- Flame retardant LSZH jacket
- Indestructible jack/plug

The cables comply with the Channel Category 6A standard according to ISO/IEC and EN50173.

In particular, the indestructible jack/plug, which can be bent back and forth hundreds of times, adds security to your IT infrastructure.



just.slim.patch CONNECTED

SLIM LIGHT CAT6A shielded

CAT6A shielded SLIM PATCH CABLE - ROUND



The Ultimate Patch Cable Experience.

Our flagship patch cable is more than just a cable; it's a testament to innovation and performance. Prepare to be amazed by what it has to offer:

- Unmatched flexibility
- Amazingly slim design
- Breakthrough performance: 2.5 / 5 / 10 Gbps
- Rugged shielding for uncompromised security
- Flame retardant LSZH jacket for enhanced safety
- Indestructible jack: Bend it a thousand times

Designed to exceed expectations, our cables meet the Channel Category 6A standard as defined by ISO/IEC and EN50173, setting the gold standard for network excellence.

Now let's talk about the game changer: the indestructible jack. Imagine a plug that bends and flexes without faltering, adding an extra layer of protection to your critical IT infrastructure. Your peace of mind is guaranteed.

Welcome to a new era in networking with SLIM® brand CAT6A LIGHT Patch Cables. These sleek marvels redefine patching for 10 Gigabit applications with their amazingly flexible and thin design.

Impeccably round, intricately twisted and fully shielded, our LIGHT Patch Cables rise to the demands of 10, 100, 1000MBit and the blazing speeds of 10 Gigabit.

Safety meets style with a flame-retardant outer jacket, while our unique RJ45 plug ensures your jack stays intact no matter what the strain.

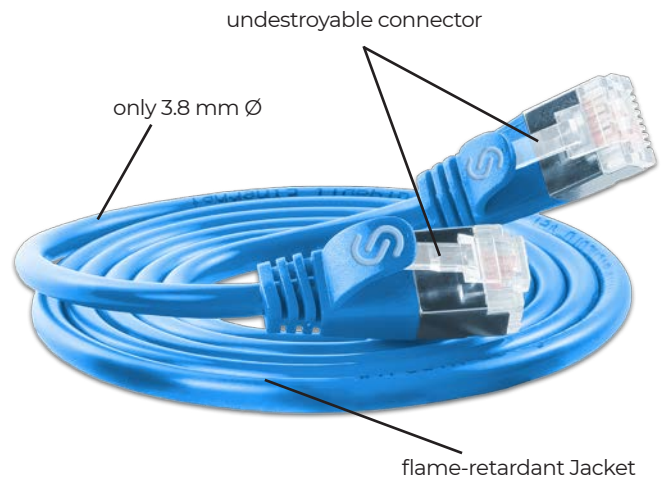
There is even more! Power-over-Ethernet transmission? Absolutely! Experience the effortless push of our specially designed plug in a sleek and compact form factor.

Elevate your potential. Choose the unmatched patch cable that redefines excellence.



DESCRIPTION

CATEGORY	CAT6A
CONNECTOR	RJ45
BOOT	SLIM Design, Latch Protection, Length in m
ASSIGNMENT	1:1 TIA/EIA 568B
SHIELD	U/FTP shielded
SHEATH	LSZH
WIRES	AWG32 100% Copper
DIAMETER	3.8 mm
TEMPERATURE RANGE	-20°C to +60°C
STANDARD COLOURS	Grey, Yellow, Red, Green, Blue, Black, White
PACKING UNIT	Single units
STANDARD LENGTHS	0.1/0.25/0.5/1.0/1.5/2.0/3.0/5.0/7.0M



“10 GBIT IN SLIM OUTFIT,”



The comparison shows the difference



The dream of every IT technician, network administrator, mechatronics engineer or building systems engineer:

- No cable clutter, cable jams, and so-called „cable management“.
- Highly flexible network cables make this dream a reality.

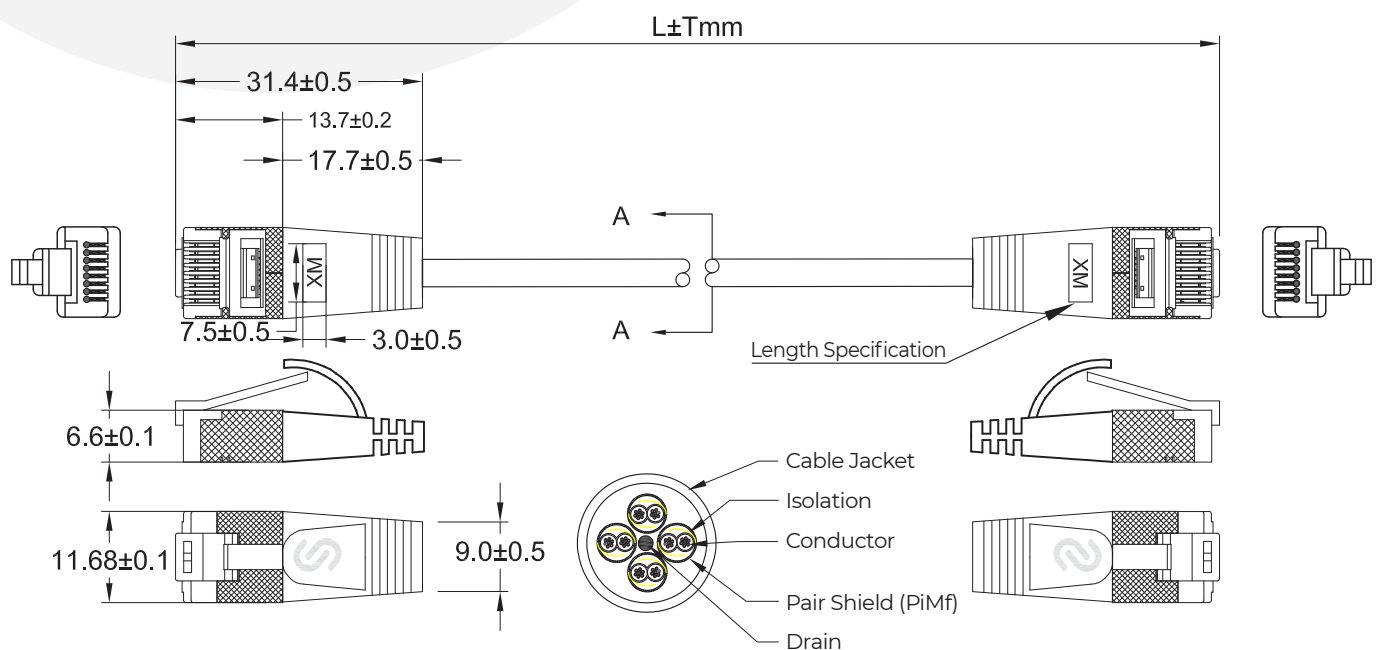
ORDERING INFORMATION

Colour	Product Number
Grey	PKW-LIGHT-STP-K6A x.x
Yellow	PKW-LIGHT-STP-K6A x.x GE
Red	PKW-LIGHT-STP-K6A x.x RT
Green	PKW-LIGHT-STP-K6A x.x GN
Blue	PKW-LIGHT-STP-K6A x.x BL
Black	PKW-LIGHT-STP-K6A x.x SW
White	PKW-LIGHT-STP-K6A x.x WS

x.x = Length Specification

Standard Lengths
0.1/0.25/0.5/1.0/1.5/2.0/3.0/5.0/7.0m

Custom Lengths Possible



SLIM CAT6A shielded

CAT6A shielded SLIM PATCH CABLE - FLAT



Unleash the Power of Speed: Introducing our High Performance Flat Patch Cable!

In the world of networking, speed is everything. That's why we understand that 10 Gigabit applications require more than their 1 Gigabit counterparts. Our state-of-the-art flat patch cable is designed to meet the extraordinary technical demands of 10 Gigabit deployments, ensuring unparalleled performance and reliability.

Equipped with superior shielding for each pair, our cables go above and beyond to maintain signal integrity. Compliant with the stringent Channel Category 6A standard of ISO/IEC and EN50173, our cables meet the highest industry benchmarks to ensure your network delivers exceptional performance.

Power-over-Ethernet transmission? We've got you covered. Our cable supports this advanced feature, giving you the flexibility to power your devices effortlessly.

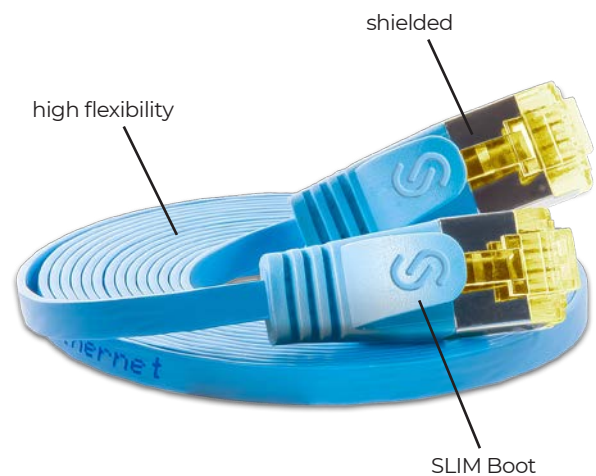
Experience convenience like never before with our specially designed plug. With user-friendly push-button operation and a sleek, compact design, connecting your devices has never been easier or more efficient.

Upgrade your network today with our high-performance flat patch cable. Embrace the future of speed, reliability and innovation. Your network deserves nothing less.



DESCRIPTION

CATEGORY	CAT6A
CONNECTOR	RJ45
BOOT	SLIM Design, Latch Protection, Length in m
ASSIGNMENT	1:1 TIA/EIA 568B
SHIELD	U/FTP shielded
SHEATH	PVC
WIRES	AWG32 100% Copper
CABLE DIMENSIONS	6.0 mm x 1.9 mm
TEMPERATURE RANGE	-20°C to +60°C
STANDARD COLOURS	Grey, Yellow, Red, Green, Blue, Black, White
PACKING UNIT	Single units
STANDARD LENGTHS	0.1/0.25/0.5/1.0/1.5/2.0/3.0/5.0/7.0M



“FLAT, FLEXIBLE AND 10 GBIT”



The comparison shows the difference



The dream of every IT technician, network administrator, mechatronics engineer or building systems engineer:

- No cable clutter, cable jams, and so-called „cable management“.
- Highly flexible network cables make this dream a reality.

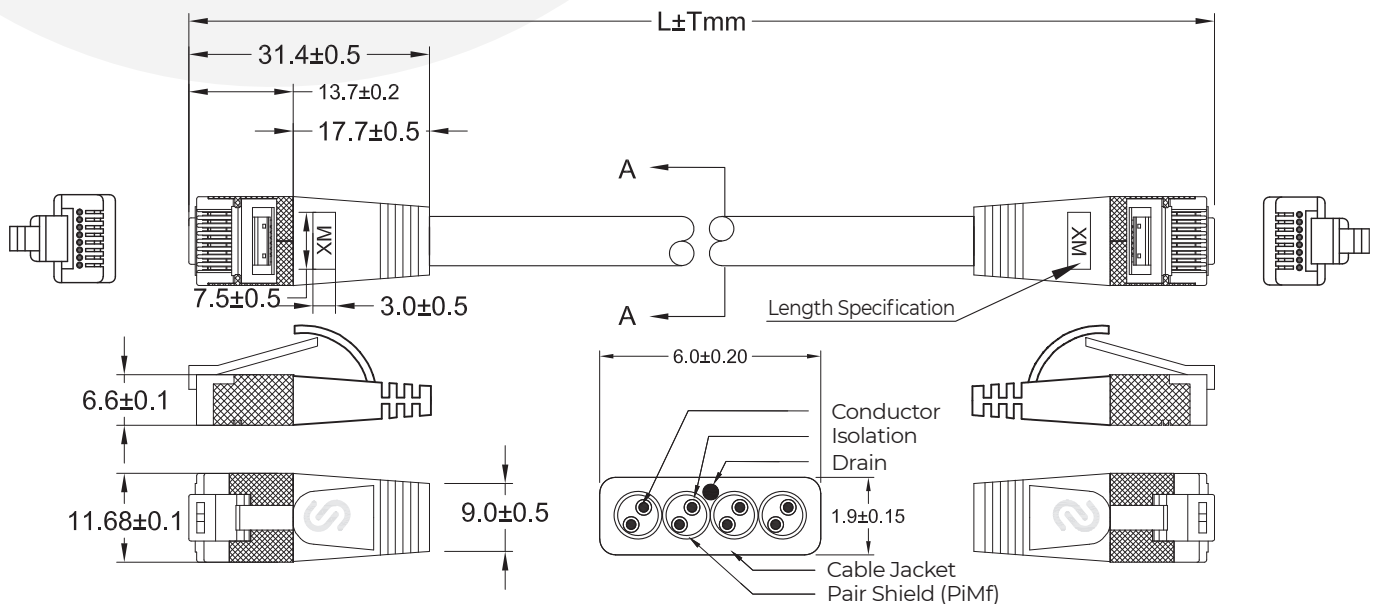
ORDERING INFORMATION

Colour	Product Number
Grey	PKW-STP-SLIM-K6A x.x
Yellow	PKW-STP-SLIM-K6A x.x GE
Red	PKW-STP-SLIM-K6A x.x RT
Green	PKW-STP-SLIM-K6A x.x GN
Blue	PKW-STP-SLIM-K6A x.x BL
Black	PKW-STP-SLIM-K6A x.x SW
White	PKW-STP-SLIM-K6A x.x WS

x.x = Length Specification

Standard Lengths
0.1/0.25/0.5/1.0/1.5/2.0/3.0/5.0/7.0m

Custom Lengths Possible



SLIM UTP

CAT6 unshielded SLIM PATCH CABLE - FLAT



This type of cable was our first in 2004. Since then, millions of units have been sold. Until today it remains one of our most popular products.

The cable is designed for 1 Gigabit Ethernet. It consists of 4 twisted pairs with the thinnest possible copper diameter, allowing for an extremely slim and highly flexible construction.

Despite the slim design, Power-over-Ethernet according to IEEE 802.3af is also possible.

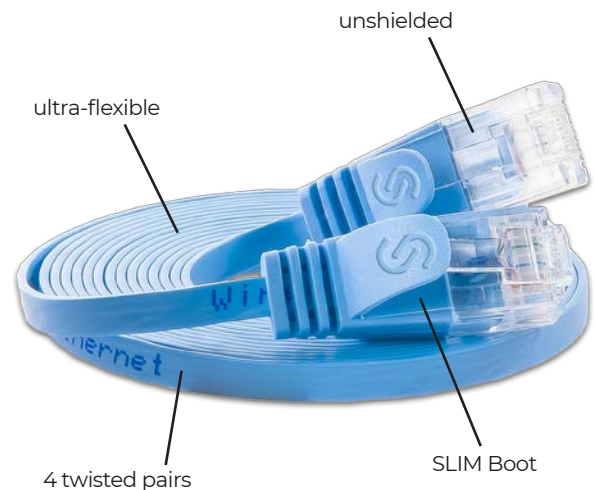
The cables comply with the Channel Category 6 standard according to ISO/IEC and EN50173.

In addition to traditional IT applications, this cable is also ideal for specialized solutions where space is at a premium. There is no patch cable that is more flexible and space-saving than this variant.



DESCRIPTION

CATEGORY	CAT6
CONNECTOR	RJ45
BOOT	SLIM Design, Latch Protection, Length in m
ASSIGNMENT	1:1 TIA/EIA 568B
SHIELD	U/UTP unshielded
SHEATH	PVC
WIRES	AWG36 100% Copper
CABLE DIMENSIONS	4,1 mm x 1,1 mm
TEMPERATURE RANGE	-20°C to +60°C
STANDARD COLOURS	Grey, Yellow, Orange, Red, Green, Blue, Violet, Black, White
PACKING UNIT	Single units
STANDARD LENGTHS	0,1/0,15/0,25/0,5/0,75/1,0/1,5/2,0/3,0/5,0/7,5/10,0/15,0/20,0/25,0m



“SIZE MATTERS,”



The comparison shows the difference



The dream of every IT technician, network administrator, mechatronics engineer or building systems engineer:

- No cable clutter, cable jams, and so-called „cable management“.
- Highly flexible network cables make this dream a reality.

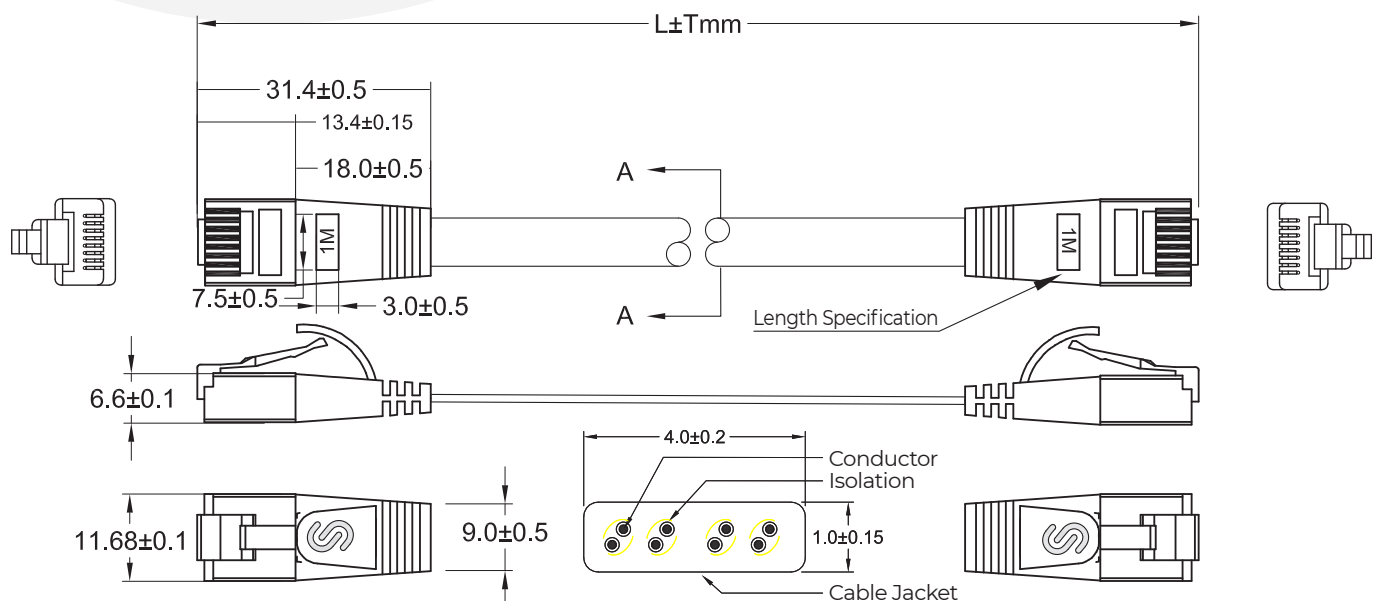
ORDERING INFORMATION

Colour	Product Number
Grey	PKW-SLIM-KAT6 x.x
Yellow	PKW-SLIM-KAT6 x.x GE
Orange	PKW-SLIM-KAT6 x.x OR
Red	PKW-SLIM-KAT6 x.x RT
Green	PKW-SLIM-KAT6 x.x GN
Blue	PKW-SLIM-KAT6 x.x BL
Violet	PKW-SLIM-KAT6 x.x VI
Black	PKW-SLIM-KAT6 x.x SW
White	PKW-SLIM-KAT6 x.x WS

x.x = Length Specification

Standard Lengths
0.1 / 0.15 / 0.25 / 0.5 / 0.75 / 1.0 / 1.5 / 2.0 / 3.0 / 5.0 / 10.0 / 15.0 / 20.0 / 25.0m

Custom Lengths Possible



SLIM shielded

CAT6 shielded SLIM PATCH CABLE - FLAT



The flat, shielded, slim patch cables are pair-shielded, category 6 patch cables suitable for Gigabit Ethernet data transmission and PoE.

Despite the pair-wise shielding, mechanical flexibility is not compromised.

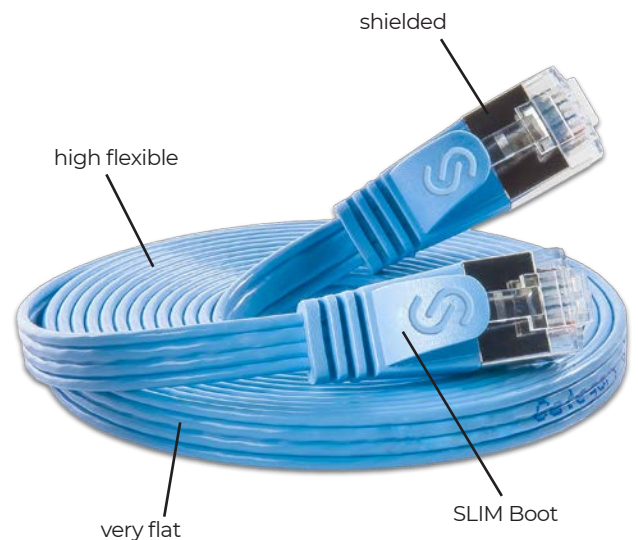
These cables are also twisted pair and shielded pair for added data transmission security.

The cables comply with the Channel Category 6 standard according to ISO/IEC and EN50173.



DESCRIPTION

CATEGORY	CAT6
CONNECTOR	RJ45
BOOT	SLIM Design, Latch Protection, Length in m
ASSIGNMENT	1:1 TIA/EIA 568B
SHIELD	U/FTP shielded
SHEATH	PVC
WIRES	AWG36 100% Copper
CABLE DIMENSIONS	6,1 mm x 1,5 mm
TEMPERATURE RANGE	-20°C to +60°C
STANDARD COLOURS	Grey, Yellow, Orange, Red, Green, Blue, Violet, Black, White
PACKING UNIT	Single units
STANDARD LENGTHS	0,1/0,15/0,25/0,5/0,75/1,0/1,5/2,0/3,0/5,0/7,5/10,0/15,0/20,0/25,0m



“**EXTREME
FLEXIBLE
INCLUDE
SHIELD:
JUST SLIM,**”



The comparison shows the difference



The dream of every IT technician, network administrator, mechatronics engineer or building systems engineer:

- No cable clutter, cable jams, and so-called „cable management“.
- Highly flexible network cables make this dream a reality.

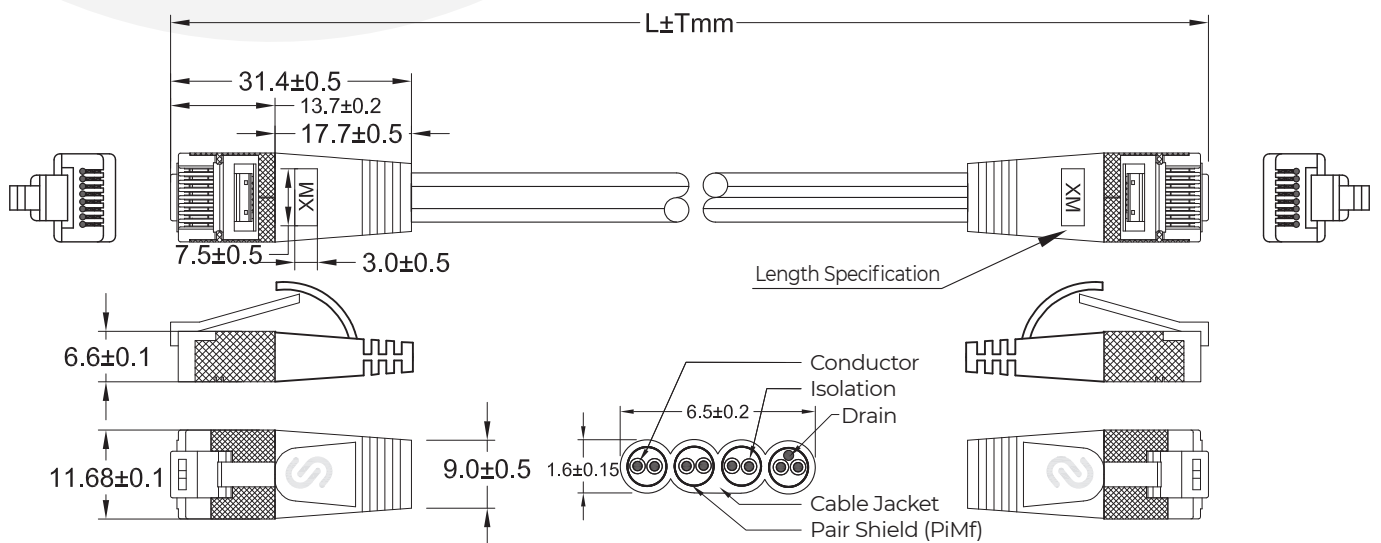
ORDERING INFORMATION

Colour	Product Number
Grey	PKW-STP-SLIM-KAT6 x.x
Yellow	PKW-STP-SLIM-KAT6 x.x GE
Orange	PKW-STP-SLIM-KAT6 x.x OR
Red	PKW-STP-SLIM-KAT6 x.x RT
Green	PKW-STP-SLIM-KAT6 x.x GN
Blue	PKW-STP-SLIM-KAT6 x.x BL
Violet	PKW-STP-SLIM-KAT6 x.x VI
Black	PKW-STP-SLIM-KAT6 x.x SW
White	PKW-STP-SLIM-KAT6 x.x WS

x.x = Length Specification

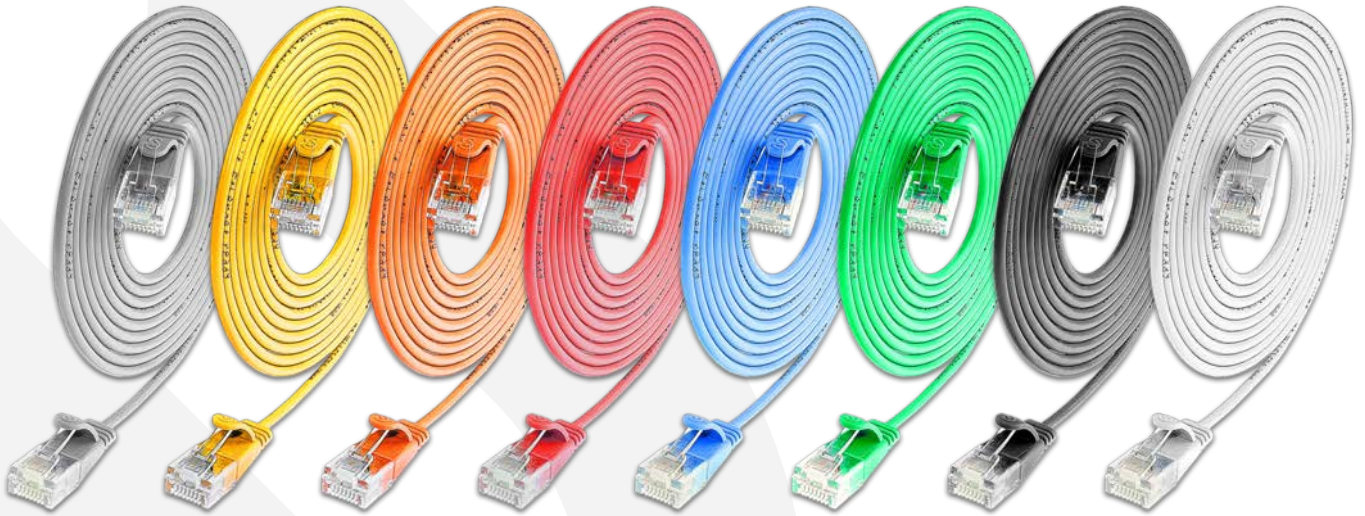
Standard Lengths
0.1 / 0.15 / 0.25 / 0.5 / 0.75 / 1.0 / 1.5 / 2.0 / 3.0 / 5.0 / 10.0 / 15.0 / 20.0 / 25.0m

Custom Lengths Possible



SLIM LIGHT UTP

CAT6 unshielded SLIM PATCH CABLE - ROUND



After years of proven success with our Slim flat patch cables, we can now offer the same performance in a round design.

The unshielded version, with a diameter of only 2.8mm, is similar to a fiber optic patch cable and achieves Gigabit Ethernet just like its flat counterparts.

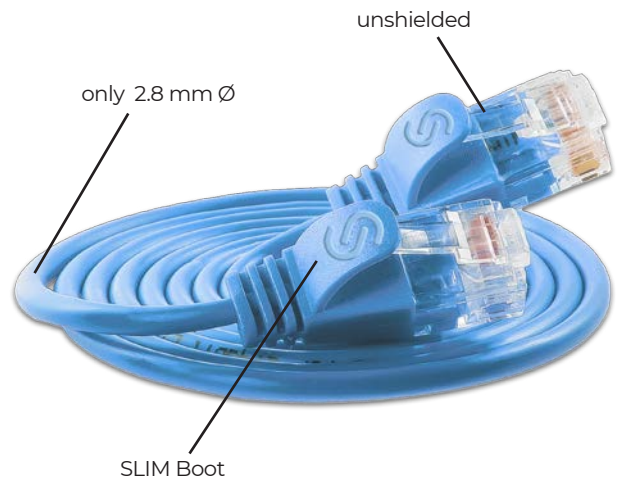
This cable enables data transfer speeds of up to 1 Gigabit Ethernet. Power-over-Ethernet according to IEEE 802.3af is also supported.

The cables comply with the Channel Category 6 standard according to ISO/IEC and EN50173.



DESCRIPTION

CATEGORY	CAT6
CONNECTOR	RJ45
BOOT	SLIM Design, Latch Protection, Length in m
ASSIGNMENT	1:1 TIA/EIA 568B
SHIELD	U/UTP unshielded
SHEATH	PVC
WIRES	AWG36 100% Copper
DIAMETER	2.8 mm
TEMPERATURE RANGE	-20°C to +60°C
STANDARD COLOURS	Grey, Yellow, Orange, Red, Green, Blue, Black, White
PACKING UNIT	Single units
STANDARD LENGTHS	0.15/0.5/1.0/1.5/2.0/3.0/5.0/7.5/10.0M



“SIZE MATTERS,”



The comparison shows the difference



The dream of every IT technician, network administrator, mechatronics engineer or building systems engineer:

- No cable clutter, cable jams, and so-called „cable management“.
- Highly flexible network cables make this dream a reality.

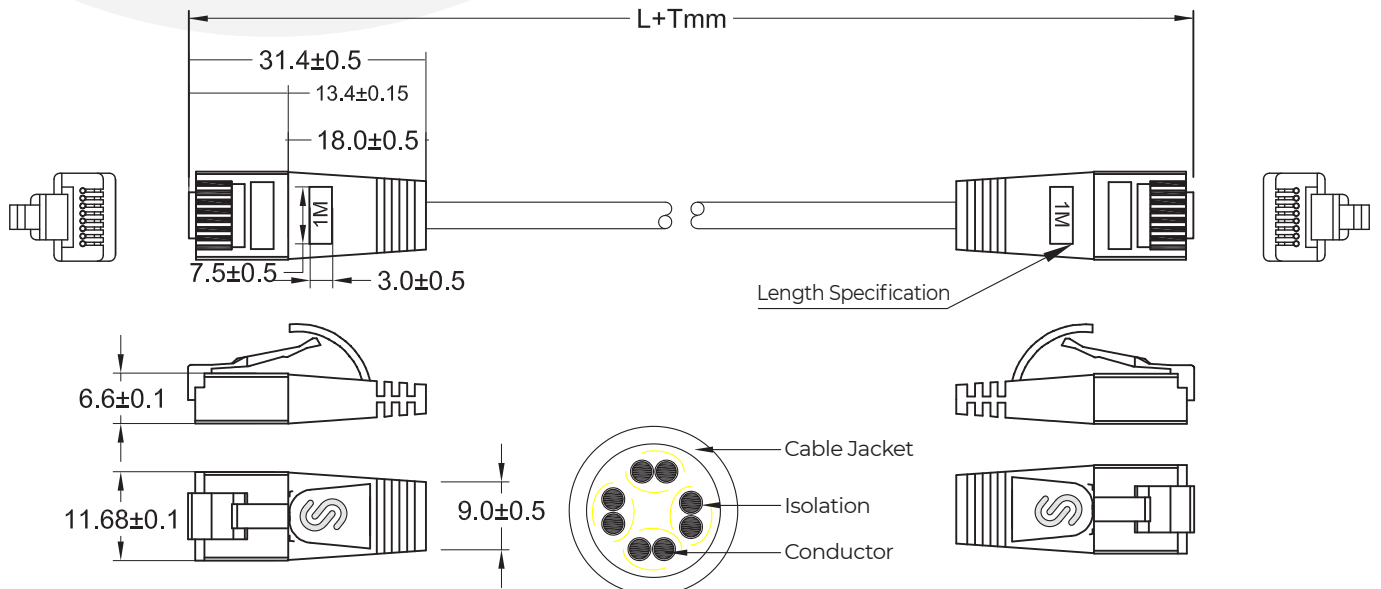
ORDERING INFORMATION

Colour	Product Number
Grey	PKW-LIGHT-K6 x.x
Yellow	PKW-LIGHT-K6 x.x GE
Orange	PKW-LIGHT-K6 x.x OR
Red	PKW-LIGHT-K6 x.x RT
Green	PKW-LIGHT-K6 x.x GN
Blue	PKW-LIGHT-K6 x.x BL
Black	PKW-LIGHT-K6 x.x SW
White	PKW-LIGHT-K6 x.x WS

x.x = Length Specification

Standard Lengths
0.15 / 0.5 / 1.0 / 1.5 / 2.0 / 3.0 / 5.0 / 7.5 / 10.0m

Custom Lengths Possible



SLIM LIGHT shielded

CAT6 shielded SLIM PATCH CABLE - ROUND



Improve your connectivity with our state-of-the-art solution: a seamless blend of elegance and performance. Meet our latest innovation—a cable that combines a timeless round design with the robust protection of full pair-wise shielding. Yet its slim 3.8mm outer diameter defies expectations, bringing you a harmonious fusion of form and function.

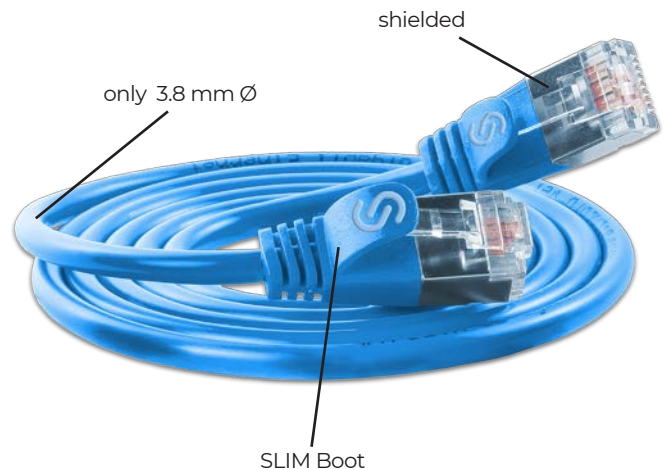
Embrace the future with confidence, as IEEE 802.3af-compliant Power-over-Ethernet support ensures uninterrupted power.

Built to the highest standards, these cables proudly meet the Channel Category 6 standard set by ISO/IEC and EN50173, embodying reliability and performance. Up your connectivity game today—redefine what's possible with a cable designed for excellence.



DESCRIPTION

CATEGORY	CAT6
CONNECTOR	RJ45
BOOT	SLIM Design, Latch Protection, Length in m
ASSIGNMENT	1:1 TIA/EIA 568B
SHIELD	U/FTP shielded
SHEATH	PVC
WIRES	AWG32 100% Copper
DIAMETER	3.8 mm
TEMPERATURE RANGE	-20°C to +60°C
STANDARD COLOURS	Grey, Yellow, Orange, Red, Green, Blue, Black, White
PACKING UNIT	Single units
STANDARD LENGTHS	0.15 / 0.25 / 0.5 / 1.0 / 1.5 / 2.0 / 3.0 / 5.0 / 7.5 / 10.0 / 15.0 / 20.0M



“SHIELDED, ROUND,”



The comparison shows the difference



The dream of every IT technician, network administrator, mechatronics engineer or building systems technician:

- No cable clutter, cable cramming, and so-called „cable management“.
- This dream becomes reality through highly flexible network cables.

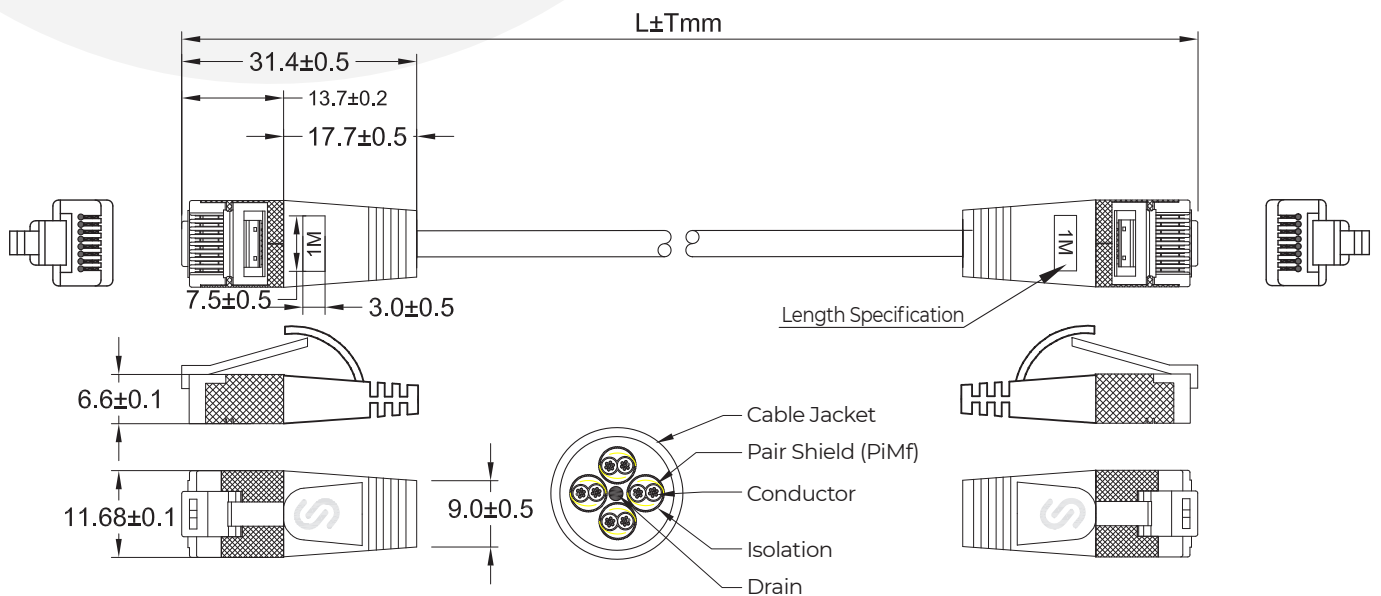
ORDERING INFORMATION

Colour	Product Number
Grey	PKW-LIGHT-STP-K6 x.x
Yellow	PKW-LIGHT-STP-K6 x.x GE
Orange	PKW-LIGHT-STP-K6 x.x OR
Red	PKW-LIGHT-STP-K6 x.x RT
Green	PKW-LIGHT-STP-K6 x.x GN
Blue	PKW-LIGHT-STP-K6 x.x BL
Black	PKW-LIGHT-STP-K6 x.x SW
White	PKW-LIGHT-STP-K6 x.x WS

x.x = Length Specification

Standard Lengths
0.15 / 0.25 / 0.5 / 1.0 / 1.5 / 2.0 / 3.0 / 5.0 / 7.5 / 10.0 / 15.0 / 20.0m

Custom Lengths Possible



SLIM TOUGH UTP

CAT6 unshielded SLIM PATCH CABLE - WITH REINFORCED NYLON JACKET



Discover greater measures of sturdiness with our TOUGH patch cables - the embodiment of strength hidden in a sleek profile. Like a hidden force, these cables contain the essence of SLIM patch cables, reinforced with an extra layer of nylon armor that enhances their mechanical strength.

Tailored to the challenges of demanding environments and the efforts of field technicians, TOUGH patch cords are a testament to durability and reliability.

Embrace the unshielded variety, a convergence of SLIM UTP cable finesse with a rugged nylon jacket that encapsulates resilience in every thread.

Meticulously engineered to the Channel Category 6 standard per ISO/IEC and EN50173, these cables promise unwavering performance. Elevate your connectivity with TOUGH patch cables-where rugged meets refined, and strength knows no compromise.



DESCRIPTION

CATEGORY	CAT6
CONNECTOR	RJ45
BOOT	SLIM Design, Latch Protection, Length in m
ASSIGNMENT	1:1 TIA/EIA 568B
SHIELD	U/UTP unshielded
SHEATH	PVC
WIRES	AWG36 100% Copper
CABLE DIMENSIONS	4.6 mm x 1.6 mm
TEMPERATURE RANGE	-20°C to +60°C
STANDARD COLOURS	Grey, Yellow, Orange, Red, Green, Blue
PACKING UNIT	Single units
STANDARD LENGTHS	0.25/0.5/1.0/2.0/3.0/5.0/10.0M



“THE TOUGH ONE”



The comparison shows the difference



The dream of every IT technician, network administrator, mechatronics engineer or building systems engineer:

- No cable clutter, cable jams, and so-called „cable management.
- Highly flexible network cables make this dream a reality.

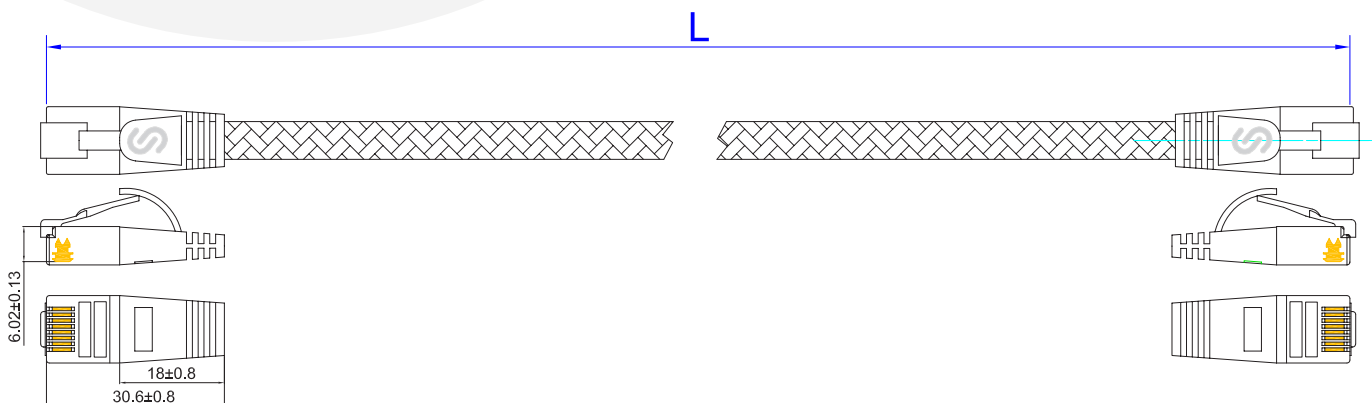
ORDERING INFORMATION

Colour	Product Number
Grey	PKW-TOUGH-K6 x.x
Yellow	PKW-TOUGH-K6 x.x GE
Red	PKW-TOUGH-K6 x.x RT
Green	PKW-TOUGH-K6 x.x GN
Blue	PKW-TOUGH-K6 x.x BL

x.x = Length Specification

Standard Lengths
0.25 / 0.5 / 1.0 / 2.0 / 3.0 / 5.0 / 10.0m

Custom Lengths Possible



SLIM TOUGH shielded

CAT6 shielded SLIM PATCH CABLE - WITH REINFORCED NYLON JACKET



Introducing TOUGH patch cables: the embodiment of internal finesse, reinforced by an external shield. Born from the essence of SLIM patch cables, these marvels are reinforced with an additional nylon jacket, forging a bond of mechanical might.

In the realm of rugged domains and the dynamic landscapes navigated by field technicians, TOUGH patch cables emerge as a beacon of unwavering reliability.

Enter the unshielded variety, where the ingenuity of SLIM UTP cable meets the rugged embrace of nylon to create a symphony of strength and precision.

Meticulously engineered to meet the Channel Category 6 standard of ISO/IEC and EN50173, these cables are built to last. Elevate your connectivity with TOUGH patch cables, where toughness meets finesse, and your network strides confidently into any challenge.



DESCRIPTION

CATEGORY	CAT6
CONNECTOR	RJ45
BOOT	SLIM Design, Latch Protection, Length in m
ASSIGNMENT	1:1 TIA/EIA 568B
SHIELD	U/FTP shielded
SHEATH	PVC
WIRES	AWG36 100% Copper
CABLE DIMENSIONS	6.6 mm x 2.0 mm
TEMPERATURE RANGE	-20°C to +60°C
STANDARD COLOURS	Grey, Yellow, Red, Green, Blue
PACKING UNIT	Single units
STANDARD LENGTHS	0.25/0.5/1.0/2.0/3.0/5.0/10.0M



“THE TOUGH ONE”



The comparison shows the difference



The dream of every IT technician, network administrator, mechatronics engineer or building systems engineer:

- No cable clutter, cable jams, and so-called „cable management“.
- Highly flexible network cables make this dream a reality.

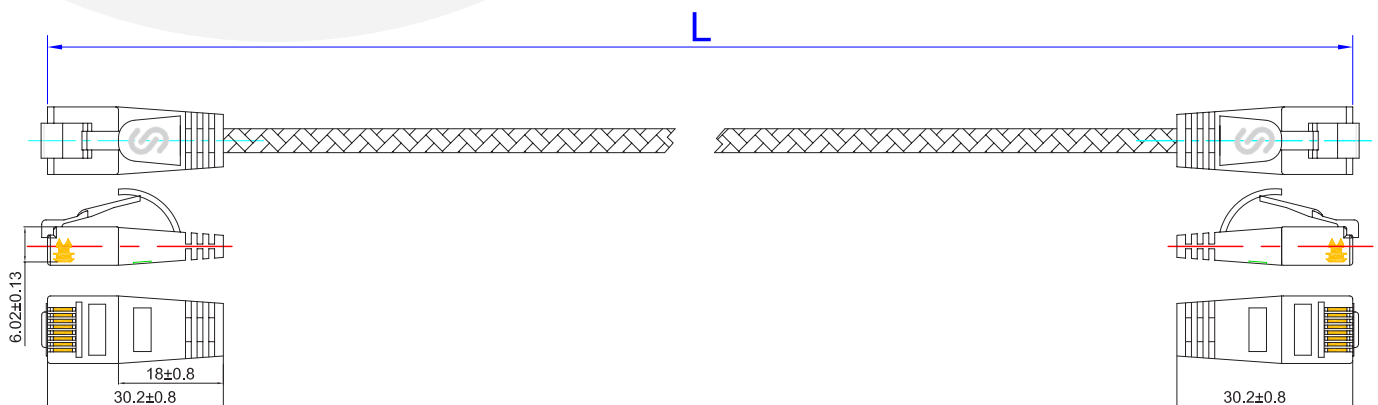
ORDERING INFORMATION

Colour	Product Number
Grey	PKW-TOUGH-STP-K6 x.x
Yellow	PKW-TOUGH-STP-K6 x.x GE
Red	PKW-TOUGH-STP-K6 x.x RT
Green	PKW-TOUGH-STP-K6 x.x GN
Blue	PKW-TOUGH-STP-K6 x.x BL

x.x = Length Specification

Standard Lengths
0.25 / 0.5 / 1.0 / 2.0 / 3.0 / 5.0 / 10.0m

Custom Lengths Possible



SPECIAL SOLUTIONS

We manufacture custom patch cable solutions for you.

SHORTER BOOT

Introducing our specially designed short boots, tailored to accommodate a wide range of cable types. This ingenious solution not only streamlines your installations, but also maximizes space efficiency in certain applications. By choosing this innovative feature, we are proud to offer our customers the unparalleled advantage of having the world's most compact plug/boot combination.



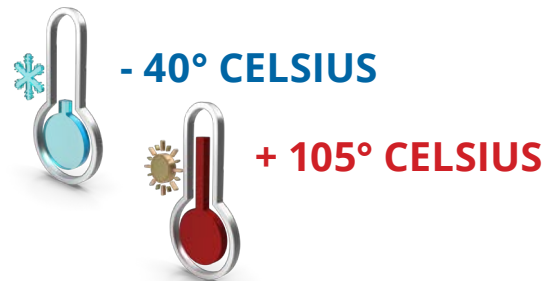
DIFFERENT CABLE CONSTRUCTION

We are pleased to offer a range of cable thickness options to meet your needs. In the realm of diverse applications, often involving transmissions outside the realm of IP protocols, the need arises for sleek designs that can accommodate marginally larger wire cross sections. Rest assured, this versatility is well within our capabilities.



TEMPERATURE STABILITY

In the realm of conditions characterized by either intense cold or scorching heat, the need for exceptional materials becomes imperative. Without these specialized materials, the inherent mechanical properties of cables are susceptible to alteration. To address this critical need, we harness the power of specialized materials designed to withstand the challenging spectrum of -40°C to +105°C, ensuring peak performance in even the most extreme environments.



DIFFERENT COLOURS

At the customer's request, we can also produce boots with different colors or custom colors. There's a whole range of possibilities. Cables in color A and boots in color B. Or for larger quantities, even a custom color for the jacket material.



RETRACTABLE PATCH CABLES

Our unshielded and shielded SLIM patch cables are also available in a retractable version.



justslim.pattech CONNECTED



SLIM

The original Slimpatchcord
www.justslim.eu





The original Slimpatchcord
www.justslim.eu

+43 3172 42299-0
office@justslim.eu